

Cottage

WE STAND TOGETHER

Safe Care. Strong Community.

2020 ANNUAL REPORT TO THE COMMUNITY

FRONTLINE GERM BUSTERS

Environmental Services
Department recognized
for keeping hospitals safe
throughout pandemic
p. 8

WE STAND TOGETHER

Safe Care. Strong Community.

THE MAGAZINE OF COTTAGE HEALTH | FALL/WINTER 2021

FEATURES

- 4 COVID-19 Pandemic Response Timeline
- 7 A Cottage Nurse on the Pandemic Frontline
- 8 SBCH Awarded Environmental Services Department of Year
- 10 Caring Never Stopped: A Cancer Cured in COVID Times
- 12 Cottage Center for Population Health: Reaching the Underserved in the Pandemic and Beyond



2020 ANNUAL REPORT

- | | |
|--|---|
| 15 Alice Keck Park Society | 32 Miles for Moms |
| 16 Cottage Benefactors | 33 Santa Ynez Valley Cottage Hospital Foundation |
| 17 Cottage Founders Society | 34 Santa Ynez Valley Cottage Hospital Foundation Raising Funds for New CT Scanner |
| 19 Cottage 1888 Society | 35 Cottage Rehabilitation Hospital Foundation |
| 20 Reaching Higher Together | 35 Cottage Rehabilitation Hospital Foundation Plans Move to Goleta Campus |
| 20 Investing in Cottage's Future | 36 Junior Wheelchair Sports Camp |
| 21 Santa Barbara Cottage Hospital Foundation | 37 Employee Giving |
| 22 Philanthropy Supports Great Nursing | 40 Cottage Health by the Numbers |
| 24 Excellence in Medical Education | 41 Financial Responsibility |
| 26 Driving Children's Health | |
| 26 Building a New Hospitality House | |
| 28 Tiara Campaign | |
| 30 Responding in Emergencies | |
| 31 Goleta Valley Cottage Hospital Foundation | |

2020/2021 COTTAGE HEALTH

BOARD OF DIRECTORS

Gregory F. Faulkner, Chair
Thomas J. Cusack, Vice Chair
Dorothy Largay, PhD, Vice Chair
Steven C. Zola, Vice Chair
Edward S. Bentley, MD, Secretary
Susan Christol-Deacon
Pamela B. Gann
Nancy Nielsen
Steve Ortiz
Ernesto Paredes
Gamble T. Parks
Richard S. Ponce, MD
Anne O. Rodriguez, MD
Ginger Salazar
Mark P. Scott, MD
Bhupi Singh
Yulun Wang, PhD

MEDICAL STAFF OFFICERS

Santa Barbara Cottage Hospital
Marc Zerey, MD, Chief of Staff
Alex Soffici, MD, Vice Chief of Staff
Anne Rodriguez, MD, Secretary/Treasurer
Philip Delio, MD, Immediate Past Chief of Staff

Goleta Valley Cottage Hospital

Robin Malone, MD, Chief of Staff
Alexander Morf, MD, Vice Chief of Staff
David Vierra, MD, Secretary/Treasurer
Gerald Svedlow, MD, Immediate Past Chief of Staff
Ryan Skrupky, MD, Member-at-Large

Santa Ynez Valley Cottage Hospital

Gustavo Dascanio, MD, Chief of Staff
Sandra Wilson, MD, Vice Chief of Staff
Travis Mellon, DO, Secretary/Treasurer
Miguel Loya, DO, Immediate Past Chief of Staff

COTTAGE HEALTH

Ron Werft, President & Chief Executive Officer
Katy Bazylewicz, Vice President for Marketing and Population Health
David Dietrich, Vice President for Advancement

FINANCIAL ASSISTANCE

Cottage Health has adopted a financial assistance policy as part of our long history as a not-for-profit organization serving the healthcare needs of the greater community. All patients, whether seeking emergent or non-emergent care, are able to apply for financial assistance or discounts toward their patient obligation. Visit cottagehealth.org/financial-assistance to learn more.

COTTAGE MAGAZINE

Letters to the editor, address changes, requests to be added or removed from our mailing list, or other magazine inquiries can be addressed to:

Cottage Magazine
Marketing Department, Cottage Health
PO Box 689, Santa Barbara, CA 93102
or emailed to mystory@sbch.org

Cottage Health
PO Box 689, Santa Barbara, CA 93102
805-682-7111

cottagehealth.org | December 2021





⬆
Lorenzo Vasquez, RN, has provided critical care to patients throughout the pandemic. In December 2020 he was one of the first frontline healthcare professionals to be vaccinated on the day Santa Barbara Cottage Hospital celebrated arrival of the vaccine.

TRUSTED TODAY, PREPARED FOR THE FUTURE, READY FOR THE UNEXPECTED

Dear fellow community members,

On December 8, 2021, Cottage Health marked an important milestone. Since the opening of Santa Barbara Cottage Hospital in 1891, the doors have never closed. Through floods and fires, earthquakes and pandemics, Cottage has served those in need in our community, every single day, for 130 years. And though much has changed in healthcare and in our world, one thing has remained constant: Cottage Health has cared for this community with excellence, integrity, and compassion.

The past two years have brought challenges unlike any previously experienced. With the announcement in January 2020 of confirmed COVID-19 in the US, Cottage physicians, nurses and other professional and support staff took steps to assure the safety of patients, the community, and each other. Remarkably, over the past two years, at times when facing incredible personal hardships, our caregivers continued to place patients as their priority, resulting in the highest national patient experience ratings in our history. We can never thank them enough for their dedicated service and for all they have done.

Many thanks to all of you who have contributed to our COVID-19 response efforts – making a difference for patients and the staff who are providing care. As we continue to navigate the rapid changes this virus continues to bring, your support and encouragement have helped sustain us. You'll read more about COVID-19 response in this issue of Cottage Magazine.

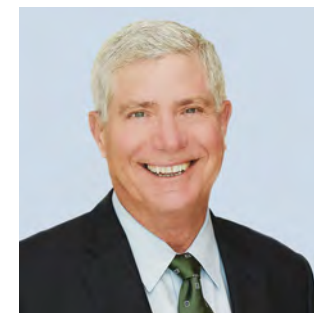
While assuring the highest quality and safety of patient care has been our focus during this pandemic, we continue to pursue other important advancements in the health of our community. Recent examples include the launch of Cottage Virtual Care, the opening of Cottage Urgent Care centers

throughout the region, the decision to add a pediatric residency to our medical education program, and our efforts to provide vaccinations to all populations we serve.

Looking ahead, with your help we will not only meet the immediate healthcare needs but also invest in the future, assuring medical excellence close to home. We will continue to provide the latest medical advancements. We will invest in our future workforce to assure the highest levels of medical, nursing, and other clinical professionals for the region. We will expand our research efforts to identify new treatments and interventions to improve health. We will improve the health of our communities by identifying and acting on the challenges and needs of the most vulnerable. And we will always be prepared for the unexpected, whether it is in an immediate emergency or injury or a complex public health crisis or natural disaster.

On behalf of the thousands of healthcare professionals at Cottage Health working to provide ongoing medical care throughout this pandemic, thank you for your encouragement and support.

Stay safe,



Ron Werft

RON WERFT
President & CEO, Cottage Health

COTTAGE HEALTH CARES FOR THE COMMUNITY

COVID-19 Pandemic Response Timeline



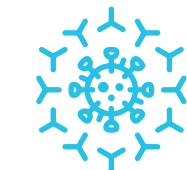
JANUARY 24, 2020
Within 24 hours of the World Health Organization (WHO) convening to assess the novel coronavirus outbreak, Cottage Health leadership convenes an incident response team to begin daily meetings, monitoring the virus and its spread.



MARCH 13, 2020
With school closures, Cottage Health develops options to help families with childcare subsidies and ensure continuity of patient care.



MARCH 18, 2020
COVID is confirmed in Santa Barbara community, and systems at Cottage Health are in place. Visitor restrictions are implemented to protect patients and staff. Supply chain teams secure PPE for pandemic preparedness. Ongoing surge planning and staff flexing is established. COVID updates are provided for staff and community.



MARCH 26, 2020
Three patients at Santa Barbara Cottage Hospital (SBCH) test positive for COVID. To prepare for a potential patient surge, four patient care units are equipped and ready to be negative pressure isolation units. New protocols are developed by infectious disease specialists and nursing staff.



MARCH 22, 2020
Cottage Health establishes new programs as needs are identified. Local lodging is provided at no cost to employees concerned with exposing loved ones to the virus. Two separate patient care units are converted to negative pressure isolation units.

The Cottage Emergency Response Fund is created to support patients, staff and our community. An outpouring of community support leads Cottage to open a community supply donation center in the Goleta Valley Cottage Hospital parking lot where individuals and organizations bring medical supplies. Community members arrive by truck, car and even bicycle to donate everything from face masks to gloves to isolation gowns for healthcare workers. Local restaurants provide meals for Cottage Health staff. Others donate funds to help support staff needing childcare and other services.

APRIL 1, 2020
22 patients are hospitalized at SBCH with COVID; seven are in critical care. SBCH provides regular census reports to media. On this date, 26 patients are at SBCH with confirmed COVID.

APRIL 15, 2020
14 patients with confirmed COVID at SBCH.

JULY 15, 2020
30 patients with confirmed COVID at SBCH.



JANUARY 29, 2020
The state of California reports two cases of novel coronavirus, with none in Santa Barbara County. The same day, Cottage Health issues precautions and procedures for the rapidly developing situation.



MARCH 11, 2020
WHO declares COVID a pandemic. The following day, Cottage Health implements remote work for employees whose roles could be moved offsite, to help protect patients and staff and keep the hospitals safe during ongoing care.

MARCH 16, 2020
Cottage Health hospitals in Santa Barbara, Goleta and Santa Ynez prepare for a potential surge in COVID patients while continuing to meet existing patient care needs. Surge tents are installed in the ER parking lots for screenings of emergency patients. Surge planning includes converting patient rooms to negative pressure for the safety of patients and staff. Cottage Health develops a dashboard of safe elective procedure metrics. This dashboard is later published by the American Hospital Association, to help other hospitals respond with safe, proven methods to manage hospital capacity.



MARCH 20, 2020
Cottage Health quickly adapts to the evolving situation. A new system of COVID symptom screenings at entrances is developed. A labor pool matches available employees to departments needing extra staff. Employees with health risks or with immune-compromised children or family members are offered alternate work – remotely or in other areas of the hospitals.

MARCH 25, 2020
For staff and dependents, Cottage Health joins with local therapists to provide online counseling for stress management, and expands childcare services. Emergency childcare for first responders and healthcare workers is established. For employees with unexpected childcare expenses, Cottage Health reimburses up to \$100 per week. A collaboration of Cottage clinicians, UCSB and local entrepreneurs produces locally-made powered air-purifying respirator (PAPR) shields to better protect staff.



MARCH 30, 2020
SBCH has 16 patients in isolation, six of whom test positive for COVID and four of whom are in critical condition. To prepare more bed capacity, the Eye Center moves to the Outpatient Surgery Center and Antepartum 2, 3 and 4 are converted to negative pressure rooms for childbirth deliveries when isolation is required for a patient with COVID.



APRIL 13, 2020
Free Cottage Virtual Care visits are offered to the community for individuals with COVID symptoms.



APRIL 16, 2020
Cottage launches Stay Safe campaign to help share messages on how to stay safe from COVID.

APRIL - AUGUST, 2020
The labor pool provides financial stability for staff. Education department springs to action to cross-train 70+ staff for critical care. The education and infection control departments collaborate to train staff on PPE protocols and specimen collection. Facilities and support services teams work with clinical teams to relocate entire units for effective isolation care during surges. Pacific Diagnostic Laboratories (PDL) successfully implements two new COVID testing instruments to provide quicker results for hospital patients. New ways to care for employees are established due to many staff being financially impacted as spouses lose jobs due to business closures. The Cottage Assistance and Relief for Employees (CARE) Fund is modified to provide monthly support for employees in need.

COTTAGE HEALTH CARES FOR THE COMMUNITY

COVID-19 Pandemic Response Timeline

SEPTEMBER 2020

When the new school year starts, Cottage Health updates its childcare resources to ensure employees receive the care they need for their families with flexible work schedules and additional temporary childcare centers.



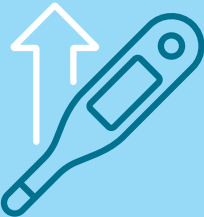
NOVEMBER 19, 2020
Two patients with confirmed COVID at SBCH.



DECEMBER 17, 2020

Cottage receives its first shipment of Pfizer's COVID vaccine. Later this same day, the first frontline staff members are vaccinated. The Southern California region reports ICU capacity of 0.5%.

DECEMBER 30, 2020
SBCH is caring for 65 patients with confirmed COVID.



DECEMBER 15, 2020

Winter surge in cases. 39 patients with confirmed COVID at SBCH.

JANUARY 5, 2021

California reports a statewide 7-day average positivity rate of 15%. Locally, Pacific Diagnostic Laboratories records 17%. SBCH converts an additional unit for negative pressure isolation, to respond to increasing needs for COVID care.



JANUARY 11, 2021

Local COVID cases near the peak of the winter surge. SBCH is caring for 93 patients with confirmed COVID, nearly a quarter of these are in critical care.

JANUARY 15, 2021

The Cottage Drive-Up COVID Vaccine Clinic opens at Goleta Valley Cottage Hospital and administers 500 vaccines the first day, to community healthcare workers and individuals age 75+. More than 1,200 Cottage staff and community volunteers will run this clinic for a total of 68 days over the next six months.



FEBRUARY 9, 2021

COVID hospitalizations decrease. SBCH converts a temporary isolation unit back to normal operation. 67 patients are in isolation with COVID; 13 are in critical care.

FEBRUARY 12, 2021

COVID hospitalizations decrease steadily. SBCH converts a second temporary isolation unit back to normal operation. 58 patients are in isolation with COVID; eight are in critical care.



MARCH 2, 2021

SBCH is caring for 18 patients with COVID; eight are in critical care.



MAY 13, 2021

The Cottage Drive-Up Vaccine Clinic begins offering vaccine for 12-15 year olds. Nearly half of the eligible population in Santa Barbara County is fully vaccinated.

JULY 13, 2021

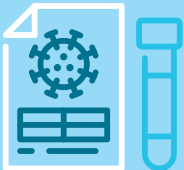
SBCH is caring for three patients with COVID; none are in critical care.

JULY 29, 2021

The Cottage Drive-Up Vaccine Clinic ends on July 29 after administering nearly 100,000 doses of vaccine since January.

JULY 30, 2021

The effects of the Delta variant are seen in rising case numbers. With data showing high transmissibility of the variant, and asymptomatic individuals spreading the virus, hospitals resume routine testing of all patients.



AUGUST 5, 2021

California releases a State Public Health Officer Order with updates on vaccination or testing requirements for all who work in and visit healthcare facilities.

AUGUST 20, 2021

11 patients are in isolation and none are in critical care. Hospitals once again limit the number of visitors.



SEPTEMBER 1, 2021

22 patients are in isolation and five in critical care.

AUGUST 22, 2021

Hospitalization numbers continue to rise. A second COVID isolation unit reopens at SBCH.

SEPTEMBER/NOVEMBER 2021

97% of CH staff is fully vaccinated. Booster doses begin for healthcare workers. Cottage continues to monitor emerging variants.

A COTTAGE NURSE ON THE PANDEMIC FRONTLINE

"I had a patient who was so critically ill that I was assigned to be responsible for only her care that day, what we refer to as a 1:1. She had been on the ventilator for several weeks, requiring sedation. Her family sent voice recordings to the social worker through our hospital iPads, and I played them every time I saw her.

"She had several children and grandchildren, and they left sweet messages encouraging her to kick the virus and come home, just to do the everyday

things like enjoy breakfast together. These messages brought me to tears every time.

"I can still hear the recordings in my mind when I think about it. When I had this patient, I couldn't help thinking of how we all cope with things differently and how everyone in this family had their own way of cheering on their mother/grandmother/wife."

MELISSA ALDECOA, BSN, RN, CCRN

SBCH AWARDED ENVIRONMENTAL SERVICES DEPARTMENT OF YEAR

Santa Barbara Cottage Hospital's Environmental Services Department recently earned the nation's top award from the Association for the Health Care Environment (AHE) of the American Hospital Association for hospitals in the 500+ beds category. The criteria included high patient survey scores for cleanliness of environment, cleaning and disinfection protocols during COVID-19 surges, and high employee retention. The honor recognizes outstanding achievements of a cutting-edge environmental services team in maintaining high levels of performance in cleaning, disinfecting, infection prevention, environmental sustainability and stewardship, technology use, patient satisfaction, education and training in critical areas.

"Our team of 151 professionals in the EVS department at SBCH is committed to the highest standards for protecting the environment and health of all patients, staff and visitors," said Nick Henderson, Vice President, Support Services. "Despite all the challenges from COVID-19, our EVS team has consistently set the bar higher to create new ways to enhance its performance for the benefit of our community."

» Members of the Environmental Services Department work throughout the hospital to help provide safe care for patients. Pictured here are (clockwise from top right): Margarita Vera, Octavio Perez, Armando Ortiz, Julio Rea, Ofelia Tejeda and Rosalba Razo.



CARING NEVER STOPPED:

A Cancer Cured in COVID Times



If you meet Henry, his smile will make you smile right back. You will notice his can-do attitude, and you will see he is smart and is an amazing athlete in all sorts of sports – baseball, skiing, hiking, skateboarding and rollerblading. You would never know that Henry faced a long, unimaginable challenge, overcame it and recently completed his last round of chemotherapy at Cottage Children’s Medical Center.

When Henry was three years old, he began experiencing symptoms like bruising easily and feeling very fatigued after riding his bike for just a minute or two. He also started having nosebleeds. Henry’s pediatrician referred him to the ER at Santa Barbara Cottage Hospital. At Cottage, Henry was diagnosed with high-risk B-cell acute lymphoblastic leukemia (ALL). This disease affects B-cells, which are essential in the immune system. The disease starts in bone marrow, where new blood cells grow. The leukemia cells grow very fast and interfere with bone marrow making enough normal cells.

“Henry was diagnosed on May 16, 2018, and stayed at Cottage Children’s Medical Center for the next 14 days to get his initial

chemotherapy and steroids,” said Henry’s father, Andrew. “The staff was amazing, and they made everything so much easier on us during the darkest times of our lives. We will forever be grateful for their compassion.”

It’s often the small moments of kindness that remain in family memories: A pediatric nurse using tape to create blue and red combinations, because Spider-Man was Henry’s favorite character. An employee who cleaned his room sharing smiles and making him laugh every morning.

In all, Henry’s treatment lasted three and a half years and included numerous hospitalizations. “Henry was brave and strong through it all,” said Giana, Henry’s mother. Then on October 8, 2021, the big day came. Henry had completed his treatments. Soon after staff gathered with his family to cheer as Henry rang the bell at Cottage Children’s Medical Center – a joyful tradition that signifies a child no longer needs chemo treatments.

From the beginning, Henry was no stranger to challenges. He was born 10 weeks premature and spent five weeks in the Haselton Family Neonatal Intensive Care Unit (NICU) at Cottage Children’s Medical Center. “The NICU nurses were angels,” Andrew said. “They took amazing care of Henry and helped keep Giana and me calm.”

These days, Henry is full of life and enjoying sports and school, where math is his favorite subject. Henry will be representing Cottage Children’s Medical Center as the 2022 Children’s Miracle Network Champion. Beating cancer amidst a pandemic will be always be part of Henry’s childhood story – and his champion spirit.



Photos of Henry as a newborn in intensive care through the last chemo treatment celebration with family (and cake!)



“We are forever grateful for the compassion and care we experienced at Cottage.”

ANDREW MILLER, HENRY’S FATHER

Cottage Children’s Medical Center cares for more than 14,000 children a year in the Acute Pediatrics Unit, Haselton Family Neonatal Intensive Care Unit, Pediatric Intensive Care Unit, Emergency Department, Pediatric Trauma Center and Grotenhuis Pediatric Clinics.

PEDIATRIC OUTPATIENT SERVICES

Cottage Children’s Medical Center and the Grotenhuis Pediatric Clinics provide comprehensive care, including:

- Developmental and Behavioral Pediatrics
- Allergy/Immunology
- Cardiology
- Concussion
- Diabetes and Endocrinology
- Gastroenterology
- Hematology/Oncology
- High Risk Infant Follow-Up
- Nephrology
- Neurology

- Ophthalmologic Surgery
- Orthopedic Surgery
- Otolaryngology
- Pulmonology
- Radiology
- Rheumatology
- Social Work
- Surgery



Cottage is now expanding its pediatric clinics to care for more children like Henry. For information, call 805-879-8980.

COTTAGE CENTER FOR POPULATION HEALTH

Meeting Community Needs in the Pandemic and Beyond

To help reach everyone in our community, the Cottage Center for Population Health (CCPH) developed new initiatives and partnerships to serve various populations including Spanish-speaking communities, the indigenous migrant community, and people without housing living in Santa Barbara County. The Community Health Ambassador program launched a pandemic response to meet needs for COVID-19 information and convenient vaccination options.

A Community Health Ambassadors (CHA) is an individual dedicated to improving the health of their community through education, navigation, referral and support. Throughout the year, CHAs have helped provide information and create easier access to vaccines by addressing barriers in areas of transportation, language and scheduling.

Future CHA Opportunities:

- Training to identify needs beyond COVID-19
- Support for partner organizations in underserved communities
- Training to help connect community members to health resources

CHA Partner Organizations:

- Carpinteria Children's Project
- Eastside Library
- Easy Lift
- El Centro Santa Barbara
- Equalitech
- Family Service Agency
- Isla Vista Youth Projects
- La Casa de la Raza
- Mi Vida Mi Voz
- Santa Barbara County Promotores Network
- Santa Barbara County Public Health Department

HIGHLIGHTS

2,310 COVID-19 prevention kits have been distributed containing face masks, hand sanitizer, vitamins, COVID-19 resource lists, and bilingual educational materials

8,846 people have received vaccine education through CHA vaccine equity outreach

778 basic needs referrals provided for food, housing, healthcare, employment, childcare, etc.

128 Community Health Ambassadors have been trained and deployed into the community

118+ COVID-19 vaccine doses provided through CHA door-to-door outreach

100+ individuals accessed vaccine clinics with transportation provided by partner organizations

35 zip codes reached across Santa Barbara County

15 cities and areas reached with COVID-19 prevention kits





2020 DONOR HONOR ROLL

COTTAGE HEALTH IS DEEPLY GRATEFUL FOR THE SUPPORT OF THE FOLLOWING GENEROUS DONORS IN 2020.

Thank you to our friends and neighbors for the outpouring of philanthropic support. These gifts enable us to make vital investments in people and programs, helping to deliver the outstanding care for which Cottage is known. Donors make a difference in the lives of patients, their families and their caregivers.

New gifts and pledges made in 2020 are listed in the following pages. Our appreciation also goes to all who continue to make donations toward pledges acknowledged in previous reports.

Every effort has been made to ensure accurate information. Please let us know if there is an error or omission. You can reach us at 805-879-8980.

THE ALICE KECK PARK SOCIETY

The Alice Keck Park Society is Cottage Health’s premier recognition society honoring philanthropists who have cumulatively invested more than \$1,000,000 in one or more of the Cottage Health hospitals.

\$15 MILLION OR MORE

Richard & Mary Compton
Lord Paul* & Lady Leslie Ridley-Tree
The Wood-Claeysens Foundation

\$5 MILLION OR MORE

Susie & Riley Bechtel
Virgil Elings
Mr. & Mrs. David W. Grotenhuis
The Stephen & Toni Haselton Family Trust
Mr.* & Mrs. J. Jerry Inskeep Jr.
Mr. & Mrs. Stewart MacDougall*
Orfalea Foundation
Mr. & Mrs. Wayne G. Siemens
Angela Starke*
St. Francis Foundation of Santa Barbara

\$2.5 MILLION OR MORE

Ann Jackson Family Foundation
Mr. & Mrs.* Art J. Bosse
Brittingham Family Foundation
The Cavalletto Charities Foundation
Elaine F. Stepanek Foundation

The Gary M. Hock Family
Mrs. Lila M. Kommerstad
Geraldine Doell Lea
Craig Mally & Louise Stewart, MD
The McAlister Family
Mr. & Mrs. Don Meyer
Mericos Foundation
SAGE Publishing
Santa Barbara Foundation
Anonymous

\$1 MILLION OR MORE

Alice Tweed Tuohy Foundation
Mr. Victor K. Atkins Jr.
Robin & Peter Barker
The Dorothy Dunshee Battin Family
The Burtness Family
Mr. & Mrs. Les Charles
CKE Restaurants, Inc.
Mr. George A. Cooper*
Mrs. Florence Corder-Witter*
Costco
Jennie Dearmin*
Mr. & Mrs. James Dodson*
Mr.* & Mrs. R. Chad Dreier

Mr. Reece J. Duca & Ms. Suzanne Duca
Baroness Léni Fé Bland*
Mr. & Mrs. Allen W. Finger*
Mr.* & Mrs. Dennis Franks
Mr. & Mrs. Frederick Gluck
Virginia Grotenhuis
Mr. & Mrs. Richard Gunner
Henry E. & Lola Monroe Foundation
Hoffmann Family Trust
Harry E. Howland*
James S. Bower Foundation
Mrs. Florence Jarvis*
Mrs. Jane Kievit*
Anne S. Kratz*
Shirley & Seymour Lehrer
Mr.* & Mrs. Jon B. Lovelace
Mr. & Mrs. Fred Lukas
Mr. & Mrs. Steve Lyons
Nora McNeely Hurley & The Manitou Fund
Mr. & Mrs.* Ken Mills
Mosher Foundation
Mr. Angelo Mozilo
Mrs. Marion Murphy*
Mr. & Mrs. Robert Mussbach*

The Oprah Winfrey Charitable Foundation
John & Wilma Quinton*
Drs. Diana & Simon Raab
Mr. & Mrs. Ivan Reitman
Mrs. Jeanne C. Rodwell*
Geoffrey Claflin & Alison Wrigley Rusack
Santa Ynez Band of Chumash Indians Foundation
Mr. & Mrs. Herb Simon
Judge C. Douglas & Constance Smith*
Mrs. Jean S. Steinhardt*
Doris E. Sturgess*
Mr. Michael Towbes*
UniHealth Foundation
Volentine Family Foundation
Mr. Dana White
Anonymous (2)

*deceased

- | | |
|--|---|
| 15 Alice Keck Park Society | 35 Cottage Rehabilitation Hospital Foundation |
| 16 Cottage Benefactors | |
| 17 Cottage Founders Society | 37 Employee Giving |
| 19 Cottage 1888 Society | 40 Cottage Health by the Numbers |
| 21 Santa Barbara Cottage Hospital Foundation | 41 Financial Responsibility |
| 28 Tiara Ball | |
| 31 Goleta Valley Cottage Hospital Foundation | |
| 33 Santa Ynez Valley Cottage Hospital Foundation | |

COTTAGE BENEFACTORS

Cottage Health’s strength and success over the years has been supported by our generous philanthropic community, whose partnership helps us to provide our patients and families with the best healthcare available anywhere.

\$500,000 TO \$999,999

Mr. & Mrs. John H. Adams*
Mr. & Mrs. Christopher H. Anderson
Mr.* & Mrs. Donald M. Anderson
Cancer Foundation of Santa Barbara
Mary Christensen*
The Craig & Susan McCaw Foundation
Credit Unions for Kids
The Douglas Foundation
Elizabeth Bixby Janeway Foundation
Ms. Maureen Fialkoff*
Georgia Lee Funsten*
The Gretler Foundation
Peter & Wanda Gucciardo
Harold Simmons Foundation
Hutton Parker Foundation
Lazer Broadcasting
The Outhwaite Foundation
Raintree Foundation
Mr.* & Mrs. Eugene Reid
The RoKe Fund
Dr.* & Mrs. Arent H. Schuyler Jr.
Mr. Charles R. Schwab
Judy & Edward* Shea
Mr. & Mrs. Theodore H. Smyth*
Mr. & Mrs. David W. Spainhour
Barbara W. Spaulding
Stephen & Carla Hahn Foundation
Walmart
William H. Kearns Foundation
Mr. & Mrs. Frank M. Wilson III
Anonymous

\$250,000 TO \$499,999

Andrew H. Burnett Foundation
The Bank of America Charitable Foundation
Mr. & Mrs. Jeff Barbakow
Mr. & Mrs. Philip L. Bernstein
The Birdwell Family Trust
Jill & John C. Bishop Jr.
Bollag Family
Mr. & Mrs. Timothy Casey
Mr. & Mrs. Reid Cederlof
Chivaroli & Associates, Inc.
Roger & Sarah Chrisman

Cox Communications
The Corwin D. Denney Foundation
through Andy & Jo Gifford
Mr. Jacques Courtois
Mr. Gordon B. Crary Jr.*
Mr. & Mrs. T. Paul Dalzell
Mr. & Mrs. George Diskant
Ms. Cathy Carter Duncan
Mr. & Mrs. Robert Feinberg
Mr. & Mrs. Gary Finefrock
Fletcher Jones Foundation
designated by Peter Barker
Mr. & Mrs. Robert C. Forst
Barbara Young-Freiberg* & Dirk Freiberg
Mr. Eugene Galles
Mr. & Mrs. Howard Gilmore
Peter & Betty Gray
Oscar & Elizabeth Guidali
Mr. & Mrs. Peter Harvie*
Mr. & Mrs. Jeff Henley
Herbert & Elaine Kendall
Charitable Foundation
Mr. & Mrs. Harry Heron*
Mr. & Mrs. Robert R. Hollman
Ms. Sally Jordan
Mr. & Mrs. Morris Jurkowitz
Lauren & Stephen* Katz
Mr. & Mrs.* David W. Keller
Mr. & Mrs. Robert T. Knight
Mr. Paul F. Glenn* & Ms. Nancy Lessner
Robert & Susan Lief
Judith Little
Peter & Janice Lorber
Ms. Evelyn Lund*
Mr. & Mrs. Eli Luria*
McCarthy Building Companies, Inc.
Amanda & James* McIntyre
Jacquie & Harry McMahon
Mr. & Mrs. Hank Mitchel
Patricia McNulty Mitchell
Montecito Bank & Trust
Mozilo Family Foundation
Dr. & Mrs. Spencer Nadler
Mr. & Mrs. Robert C. Nakasone
Henry & Nanette Nevins

Mr. & Mrs. Robert E. M. Nourse
Dr. Gregory P. Olsen & Ms. Kathy Ireland
The Mastick Foundation
Mr. & Mrs. Douglas B. Otto
Mr. Alex Pananides & Ms. Janet Dunbar
Mr. & Mrs. William Peeples
Mr. & Mrs. Alexander M. Power
Public Health Institute
Mr. & Mrs. Andrew Puzder
Reiter Family Foundation
Rincon Broadcasting LLC
Rite Aid Corporation
Santa Barbara Bank & Trust
Santa Barbara Radiology Medical Group, Inc.
The Santa Ynez Valley Foundation
SASCO
Mrs. Judith Stanton
Dr. & Mrs.* Robert E. Stenson
Carole & Sebastiano Sterpa
Ms. Judy Stewart
Mr.* & Mrs. Selby Sullivan
Ms. Claudia Taden
Mrs. Marilyn P. Tennity*
Mr. Christopher J. Toomey
Dr.* & Mrs. H. Wallace Vandever
Mr. & Mrs. Robert Veloz
Venoco, Inc.
Mr. & Mrs. E. Duke Vincent
Dr. & Mrs. Nicholas J. Vincent*
Mr. & Mrs. David Viniar
Wallis Foundation
Mr. Stephen R. Warner & Mr. Vincent A. Turano
Mr. John L. Warren & Dr. Bronwen Brindley
W.M. Keck Foundation
Mr. & Mrs. Nicholas N. Weber
Williams-Corbett Foundation
The Wrather Family Foundation
Leslie & Robert Zemeckis
Anonymous (5)

**deceased*

COTTAGE FOUNDERS SOCIETY

Cottage is honored to recognize members of the Cottage Founders Society. Listed here are donors who have made cumulative contributions of \$50,000 to \$249,999 from January 1, 2004, through December 31, 2020, to any Cottage Health hospital.

\$100,000 TO \$249,000

Mr. & Mrs. Stephen Adams
Mr. & Mrs. Byron W. Allen
Mr. J. Robert Andrews & Dr. Margaret Wilkinson
Anesthesia Medical Group of Santa Barbara, Inc.
Mr. & Mrs. Romauld Anthony*
Armstrong Associates-Earl & Leslie Armstrong
Mr. & Mrs. Leon P. Bartholomew
Mr.* & Mrs. John Bennett
Bentson Foundation
Mr. & Mrs. John J. Bessolo
Dr. & Mrs. B. Paul Blasingame*
Mr. & Mrs. Mario F. Borgatello*
Borgman Family Foundation
Mr. Richard E. Bovet*
Mr. & Mrs. John C. Bowen*
Brown Family Foundation
Mr. & Mrs. Anthony Browne
Dr. & Mrs. Aaron Budgor
Cal Poly Dance Marathon
Mr. & Mrs. Edward B. Caplan*
Mr. & Mrs. Barry Cappello
David & Leila Carpenter
Mr. Frank Caufield*
Charles & Diane Chester
CoastHills Credit Union
Mr. & Mrs. John M. Cohen
Mr. & Mrs. Thomas Coleman
Corner Store, Inc.
Mr. Corwin C. Corpuz & Dr. Donna L. Kell
Mr. & Mrs. David F. Cronenbold
Ms. Suzanne Ryan Curran Dalston
Ms. Barbara Ann Davis*
Diane & Bruce Halle Foundation
Mr. & Mrs. Raymond B. Dingman Jr.
Mr. & Mrs. James E. Drasdo
Earle Family Trust
Mr.* & Mrs. Christopher Edgecomb
Eli & Edythe L. Broad Foundation

Dr. & Mrs. Robert J. Emmons
Entravision
Tim & Audrey Fisher
Mr. & Mrs. Michael H. Focht
Mrs. Charlotte S. French*
Mr.* & Mrs. Gil Friesen
Mr. & Mrs. John Gabbert
Mr. Daniel J. Gainey*
The Geiger Family
Mr. & Mrs. Jay Glazer
Gordon Ross Medical Foundation
Mrs. Frances B. Gray*
Griffith & Thornburgh, LLP
Mrs. Margaret S. Hamister
Mr.* & Mrs. Lawrence Hammett
William T. Hammond
Mr. & Mrs. Douglas Hampson
Mr. & Mrs.* Thomas J. Harriman
Mr.* & Mrs. Paul W. Hartloff Jr.
Mr. & Mrs. Robert C. Hazard Jr.
Richard & Velvet Heller
The Henry W. Bull Foundation
Mr. & Mrs. Brian Herman
Higgins-Trapnell Family Foundation
Mr. & Mrs. George W. Holbrook
Ms. Judith Hopkinson
Mr. & Mrs. Ralph T. Iannelli
Mr.* & Mrs. Frederic B. Ingram
The Iscovich Foundation
Mr.* & Mrs. Carl Jensen
Mr. & Mrs. Peter Jordano
Mr. & Mrs. W. P. Karras Jr.*
Mr. & Mrs. Brian J. Kelly
The Kirby-Jones Foundation
Mr. & Mrs. Donald E. Lafler
Mr.* & Mrs. James H. Lindsey
LPGA Amateur Golf Association
Ms. Sandra L. Lynne
Mr. & Mrs. John R. Mackall
MarBorg Industries
Ms. Sara Miller McCune
Mr. & Mrs. William J. McKinley

John A. Michal*
Mr. & Mrs. Marshall Milligan
Ms. Cynthia Mitchel*
Mr. John C. Mithun
Friend of Cottage Hospital*
Mr. & Mrs. Ronald B. Morrow
Dancing Tides Foundation
Murray Company
Mr. & Mrs. Chapin Nolen
Overall Family Foundation
Panda Express
Mrs. Robert Parker
Mrs. Helen L. Pedotti*
The Peter Douglas Foundation
Mr. & Mrs. Wes Poulson
Pueblo Radiology Medical Group
QAD, Inc.
The Quijano Family
RE/MAX Santa Barbara
Mr. & Mrs. Robert Reingold
Mr. & Mrs. Ian Ritchie
Santa Barbara Home
Improvement Center
Mr.* & Mrs. Richard L. Schall
Mr.* & Mrs. James Scheinfeld
Ms. Joan D. Scolari*
Mrs. Gerry B. Shepherd
Dr. & Mrs. Julio Soares
Marianne & Norman F.* Sprague III, MD
Mr. Fredric E. Steck
Ms. Caroline Sullivan
Mr. Herbert A. Tews
The Schlinger Chrisman Foundation
Kristin & Tom Thompson
The Vos Family Foundation
Mr. & Mrs.* William Wayne
Ms. Ann Welch*
Mr. & Mrs. Ron Werft
Mr. & Mrs. Kyle B. Wescoat
Mrs. Charles W. Wieland*
The William A. Davidson Family Trust
Mr. & Mrs. James N. Wilson

Winslow Maxwell Charitable Trust
Mr. David Yee-yan Wong & Ms. Susan Tai
Mr. & Mrs. Howell D. Wood
Mr.* & Mrs. William D. Wright
Yardi
Linda Seltzer Yawitz
Mr. & Mrs. James V. Zaleski
Anonymous (6)

\$50,000 TO \$99,999

Ace Hardware Corp.
Mr. & Mrs. David V. Adams
Dr. & Mrs. Thomas R. Allyn
Anesthesia Associates Medical Group
Applied Medical
Bank of America Merrill Lynch
Mr. & Mrs. Tom Barrack Jr.
Ms. Rona Barrett
Mr.* & Mrs. J. William Beaver
Mr. & Mrs. Thomas Beckmen
Mr. & Mrs. Ron Biscaro
Sarah L. Black*
Mr. & Mrs. Timothy K. Bliss
Mr. & Mrs. Mario A. Borgatello
John & Ruth Braun*
Mrs. Aubrey E. Brennan*
Mr. & Mrs. Robert Bricher
Mr.* & Mrs. Jack R. Brink
Mr. & Mrs. Daniel P. Burnham
Capparelli/KHS&S
Dr. John Carbon & Dr. Louise Clarke
Mr. & Mrs. Lee Carr
Mr. & Mrs. Steven R. Charles
Community West Bank
Maryann Conner
CO-OP Financial Services
Cottage Rehabilitation Hospital
Foundation
Mr. & Mrs. J. Hewes Crispin*
Mr. & Mrs. Thomas J. Cusack
Dan Murphy Foundation

Mr. & Mrs. Barry DeVorzon	Ms. Rose Ann Hill*	Rabobank	Mr. & Mrs. Robert Sternin
The Don & Susan Bennett Family Fund	Hollis Norris Fund	Ralphs	Mrs. Wilmoth Tannahill*
Ms. Jane S. Dyruff	Mr. & Mrs. George Isaac	Dr. & Mrs. Robert A. Reid	Ms. Marcia H. Terry*
ExxonMobil Company, USA	Mr. & Mrs. Charles “C. J.” Jackson	Mr. & Mrs. Arthur J. Rice III	Mrs. George B. Turpin
Mr. & Mrs. Steven Fellows	Mr. & Mrs. Fred S. Jamner	Mr. Harold Richards*	Drs. Russell D.* & Charlotte S. Tyler
Mr. & Mrs. Stanley C. Fishman	Ms. Gertrude B. Johnson	Riva Ariella Ritvo-Slifka &	UCSB Dance Marathon
Mr.* & Mrs. Stanley Flaster	Mr.* & Mrs. Owen Johnston Sr.	The Alan B. Slifka Foundation	Vallarta Supermarkets
Judge* & Mrs. Paul G. Flynn	Mrs. Margaret J. Jordan*	Robert K. & Barbara J. Straus	Mrs. Winifred Vedder*
The Foster Family	Mr. & Mrs. Dennis Jorgensen	Family Foundation	Mr. & Mrs. Gary Waer
Dr. & Mrs. H. Vernon Freidell*	Mrs. Eralda Kogan*	Mrs. Gladys Roberts*	Mr. W. W. Watling
Ms. Valerie Fuette	Lompoc Artificial Kidney Center, LLC	Nancy Robins & Scott Tevis	Mr. Harold S. Wayne*
G.A. Fowler Family Foundation	Mr. & Mrs.* Don K. Louie	Rick & Regina Roney	Mr.* & Mrs. Louis Weider
Miss Sally Gane*	Mrs. Constance Lund	Mr. & Mrs. Marshall A. Rose	Mr. & Mrs. Richard B. Welch
Gardner Grout Foundation	Michael M. Peacock Foundation	Mr. & Mrs. Ed Rosenblatt	Frances Haggerty Weldon*
Mr. George Gelles & Ms. Christine Garvey	Mr. Brian Miller & Ms. Carol Burnett	Santa Barbara Artificial Kidney	Mrs. Katie R. Werft*
The Gatherer Family Foundation	Dr. Peter L. Morris	Center, LLC	Mr. & Mrs. Bernard White
Ms. Alexandra Geremia	Marie L. Morrisroe	Santa Barbara Cottage Hospital	Dr. & Mrs. Phillip J. Wyatt
Mr.* & Mrs. David Giorgi	Mr. David F. Myrick*	Pathology Department	Ms. Mary Ellen Trainor Zemeckis*
Mr. & Mrs. Michael A. Goldberg	Mrs. Jean Ogle	Mr. & Mrs. Victor Schaff	Mr. & Mrs. Steven Zola
Mitchell & Lisa Green	Dr. & Mrs. Robert W. Olson	Mr.* & Mrs. Joe S. Scher	Anonymous (5)
Drs. George & Mary Ellen Guffey	Pacific Western Bank	Mr. Henry Schimberg*	
Mr. & Mrs. Norman Habermann	Ms. Ashley Parker Snider	Mr. & Mrs. John Seiter	
Dr. & Mrs. Benjamin Hammett	Mr.* & Mrs. Andrall Pearson	Mr. & Mrs. Mike Sell	
Mr. & Mrs. Joseph Hardin Jr.	Mr. & Mrs. Richard J. Pearson	Drs. Mohammed & Ayesha Shaikh	
Mr. & Mrs. David F. Hart*	Mr.* & Mrs. Nelson Pfister	Mr. & Mrs. Jim Shattuck	
The Hearst Foundations	Mr. Burt Polin	Mr. & Mrs. Jay D. Smith, Esq.	



COTTAGE 1888 SOCIETY

We gratefully acknowledge Cottage 1888 Society members for remembering one of the Cottage hospitals in their estate plans or with a deferred gift.

CHARTER MEMBERS

Christel Bejenke
Ron & Laurie Biscaro
Jeptha* & Suzanne Dalston
Richard* & Donnalee Davis
Cathy Carter Duncan
Dennis & Patty* Forster
Thomas & Anne Goodson
Peter & Gerd Jordano
Herbert & Elaine* Kendall
Robert* & Nancy Knight
James & Chris McNamara
Randi Miller &
Terry Cunningham
Robert & Patti Reid
Paul* & Leslie Ridley-Tree
Ron & Mary Werft

MEMBERS

Peter & Rebecca Adams
Christine & Donald* Anderson
Larry & Judi* Anderson
J. Robert Andrews
David (Shel)* & Ann Arnot
Lee & Shiela* Asseo
Joel Baker
James P. Barbabella
Jeffrey & Margo Baker
Barbakow
Robert & Susan Barnes
Rona Barrett
Herbert & Mareva Barthels
Melanie & Richard* Baum
John* & Joan Bennett
Rod & Sharon Berle
Barbara Bertram
Jean Blois
Art & Kathleen Bossé
Robert & Joan Bricher
Clara Brown
Lance & Judi Brown
Thomas & Nancy Bryant
George Burtness

Robert Burtness
William S. Burtness
August Cal
Robin & Reid Cederlof
Julie Chacko
Charles & Diane Chester
Bernadette Cohen
James Collins
Richard & Mary Compton
Patricia Corn
Jacques Courtois
Christina Criswell &
John Gilbert
Paul & Bobbi Didier
David Dietrich
Carol & Wilton* Doane
James & Wendy Drasdo
Virgil Elings
Mary Esperti
Robert & Kimberly Fatch
Stanley & Roberta Fishman
Robert & Sheila Forst
Richard & Irene Fulton
Eugene Galles
Alexandra Geremia
Stephen Geremia
Howard & Nancy Gilmore
Amylynn Girling
Frederick & Linda Gluck
Thomas & LeeBerta Graham
Jon & Barbara Greenleaf
Robert Gronendyke
David & Anna Grotenhuis
Virginia Grotenhuis
Peter & Wanda Gucciardo
Oscar & Elizabeth Guidali
Norman & Jane Habermann
Lorraine Hansen
Thomas & Eleanor* Harriman
Lawrence & Nancy Harter
Toni & Stephen* Haselton
Vicki & Bob Hazard
Patricia Heller

J. Jerry* & Jacqueline Inskip
Angel & Lisa Iscovich
Harry G. Jarvis
Hugh S. Jarvis
Sally Jordan
Lauren & Stephen* Katz
Bobbie* & John Kline
Richard & Victoria Krost
Jeffrey Kupperman &
Nancy Nudell
Robert Kvaas
Dorothy Largay &
Wayne Rosing
Geraldine Doell Lea
James* & Charlotte Lindsey
Robert & Mary Ellen* Logan
Carla Long
Peter & Janice Lorber
James & Sharon Lutz
Craig Mally & Louise Stewart
Ken & June Martin
Gerry McCormack
George & Sally Messerlian
Don & Joan Meyer
Marshall & Gretchen Milligan
Ken & Mary Lloyd* Mills
Patricia Mitchell
Keith Moore
Marie Morrisroe
Spencer & Myra Nadler
Lynda Nagra
Robert & Lynn Nakasone
Robert & Alexandra Nourse
David Obst & Jane Gottlieb
Alex Pananides &
Janet Dunbar
Gerald & Claire Parent
Russee Parvin
William & Ardyce Peoples
Nancy Peschek
Joseph* & Helene Pollock
Margaret Revello
George & Marlene Riemer
Frank Roberts

John Roberts
George & Annette Robson
Kathleen Schepanovich
Thomas & Carol Schleck
Judy Shea
Wayne & Sharol Siemens
Charles & Stephanie Slosser
Jay & Sally Smith
David & Carolyn Spainhour
Brenda Stanley
Robert & Jane* Stenson
Denise Stevens &
Quentin Panek
Stephen & Susan* Stone
Diane & Selby* Sullivan
Claudia Taden
Herbert & Karen Tews
Marnie Thielmann
H. Ted & Cynthia Thoreson
Pamela Tinker
Carl Jensen* & Lou Ann Treloar
Jack & Christa Turney
Charlotte & Russell* Tyler
Carol Ann Van Fossen-Knight
Edward Duke &
Pamela Vincent
Victoria Ward
Steve Warner &
Vincent Turano
Edwin & Mary Weston
Dana White
Anonymous (7)

HONORARY MEMBERS

James E. Davidson

IN MEMORIUM

Judi Anderson
Carol & Gilbert Ashor
Richard Baum
Barbara Benon
George Cooper
Georgia Funsten

Caroline Gazin
Lad Handelman
Harry Howland
Joan & Robert Jacobs
Betty Jensen
Jane Kievit
Robert Knight
Mary Ellen Logan
Louisa & Stewart MacDougall
Elaine Marcus-Millar
Alice Mardon
Kathleen Mayes
Mary Lloyd Mills
Jean Nell
John Nigra
John & Wilma Quinton
Jean A. Robertson
Hans Skytt
Jane Stenson
Delores Sternot
Doris Sturgess
Edith Tipple
Carl & Carolyn Williams

*deceased

REACHING HIGHER TOGETHER

If you walk through the main concourse in the lobby of Santa Barbara Cottage Hospital, you'll see a new donor recognition installation designed to honor early leadership contributors to the SBCH Foundation's **Reaching Higher Together Campaign**. These generous contributors to the \$130M effort are partnering with Cottage to ensure the people of Santa Barbara have the best healthcare in the nation – right here at home. They are helping us to envision bold new ways to promote excellence and innovation to strengthen patient care, education, research and the health of our community today and into the future.

The Campaign will enter its public phase in 2022 and the entire community is encouraged to participate.



To learn more about giving opportunities, please contact David Dietrich at 805-569-7345.



INVESTING IN COTTAGE'S FUTURE

Amidst the immediate impact of the pandemic, donors have continued to make significant gifts to strengthen the long-term capacity of Cottage Health to care for the community.

These investments in Cottage's future assure that medical excellence, innovation, and our ability to respond to the unexpected will continue to thrive on the Central Coast.

One of these forward-thinking commitments is from David and Anna Grotenhuis, Wayne and Sharol Siemens, and Virginia Grotenhuis. Their contribution, valued at \$14M, will create a consolidated Cottage business services campus in the years ahead – bringing together non-clinical departments including Advancement, Finance, Human Resources, Information Technology & Services, Marketing, Supply Chain, Research and Revenue Cycle for more efficient and collaborative workflow among these departments currently in multiple locations across Santa Barbara and Goleta.

David and Anna have been long-time supporters through their giving to the Grotenhuis Pediatric Clinic and critical care services.

“Santa Barbara Cottage Hospital has provided extraordinary care for our community for 130 years,” Wayne said. “We share a feeling of appreciation and pride in the care Cottage provides to our friends and neighbors, and we are excited to support Cottage into the future.”

Another important commitment comes from Virgil Elings, PhD, an entrepreneur and UCSB professor of physics for 20 years. Dr. Elings has become one of the region's most recognized philanthropists through his giving to education, park lands, research and healthcare. By designating his gift as unrestricted, Dr. Elings enables Cottage to apply the funds where they will have the most impact in providing patient care.



The main lobby at Santa Barbara Cottage Hospital has been named Virgil Elings Lobby in recognition of his gift commitment of \$5 million.

SANTA BARBARA COTTAGE HOSPITAL FOUNDATION

2020 BOARD OF DIRECTORS

Gregory F. Faulkner, Chair
Thomas J. Cusack, Vice Chair
Dorothy Largay, PhD, Vice Chair
Steven C. Zola, Vice Chair
Edward S. Bentley MD, Secretary
Susan Christol-Deacon
Pamela B. Gann
Nancy Nielsen
Steve Ortiz
Ernesto Paredes
Gamble T. Parks
Richard S. Ponce, MD
Anne O. Rodriguez, MD
Ginger Salazar
Mark P. Scott, MD
Yulun Wang, PhD

\$5 MILLION OR MORE

Mr. & Mrs. David W. Grotenhuis
Mr. & Mrs. Wayne G. Siemens

\$1 MILLION OR MORE

Mr. George Burtness
Ms. Virginia Grotenhuis
Mr. & Mrs. Don Meyer
Mosher Foundation
Mr. Angelo Mozilo
Mr. Dana White

\$500,000 TO \$999,999

The Wood-Claeyskens Foundation

\$250,000 TO \$499,999

Susie & Riley Bechtel
The Diskant Family Foundation
Mr. Eugene Galles
Hutton Parker Foundation
James S. Bower Foundation
Robert & Susan Lief
Peter & Janice Lorber
St. Francis Foundation of Santa Barbara

\$100,000 TO \$249,999

Alice Tweed Tuohy Foundation
Clifford F. Ahlers Trust
Costco
Elaine F. Stepanek Foundation
Mr. & Mrs. William J. McKinley
Henry & Nanette Nevins
The Oprah Winfrey Charitable Foundation
Panda Express
Raintree Foundation
Mr. Christopher J. Toomey
UniHealth Foundation
Mr. & Mrs. Nicholas N. Weber

\$50,000 TO \$99,999

Ace Hardware
Mr. & Mrs. David V. Adams
Mr. & Mrs. Christopher H. Anderson
Mr. & Mrs. Philip L. Bernstein
Cancer Foundation of Santa Barbara
Mitchell & Lisa Green
Mr. & Mrs. Fred Lukas
The Mastick Foundation
Mr. & Mrs. Hank Mitchel
Credit Unions for Kids
G.A. Fowler Family Foundation
Rincon Broadcasting, LLC
Rite Aid
The Schlinger Chrisman Foundation
United Way of Santa Barbara County
Walmart
Anonymous

\$25,000 TO \$49,999

Mr. and Mrs. David J. Borgatello
Cal Poly Dance Marathon
The Corwin D. Denney Foundation through Andy & Jo Gifford
Mrs. Elizabeth H. Edwards
Mr. & Mrs. Bill Feeney
Mr. & Mrs. Peter Jordano
Lazer Broadcasting
Mr.* & Mrs. Jon B. Lovelace
Mr. & Mrs.* Ken Mills
Riva Ariella Ritvo-Slifka & The Alan B. Slifka Foundation
Carole & Sebastiano Sterpa
Mr. & Mrs. David Viniar
Mr. & Mrs. Chuck Zegar
Anonymous

\$10,000 TO \$24,999

Arndt Construction, Inc.
Ms. Betsy Atwater
Mr. & Mrs. Richard A. Berti
Mr. & Mrs. Anthony Browne
Mr. & Mrs. Andy Busch
Mr. & Mrs. Donovan A. Chalfant
Marcia & John Mike Cohen
Mr. & Mrs. Thomas J. Cusack
Dancing Tides Foundation
Mr. & Mrs. Raymond B. Dingman Jr.

Entravision
Epic Systems Corporation
Mr. Mitch Grossman & Ms. Janice Feldman

Mr. & Mrs. Gary Finefrock
Tim & Audrey Fisher
Foley & Lardner LLP
Georgia Lee Funsten*
Gardner Grout Foundation
Greater Good Charities
The Hamister Foundation
Herbert & Elaine Kendall Charitable Foundation
Mr. & Mrs. Brian Herman
Kate Farms

The Kirby-Jones Foundation
Mr. & Mrs. Bruce Kovner
Linked Foundation
Ms. Sandra L. Lynne
Mrs. Sherry Maudsley
Mr. & Mrs. Marshall Milligan
Mr. & Mrs. Jeffrey Millman
Montecito Bank & Trust
Mr. Leonard Gumport & Ms. Wendy Munger
Ms. Nancy Nielsen
Overall Family Foundation
Pacific Acoustics North
Mr. & Mrs. Charlie Petersen
Geoffrey Claflin & Alison Wrigley Rusack
Santa Barbara Foundation
Santa Barbara Home Improvement Center
Santa Ynez Band of Chumash Indians Foundation
Mr. & Mrs. Barry K. Schwartz
Mr. John Solu
Mr. W. Van R. Spaulding
Starlight Children's Foundation

The Stephen & Toni Haselton Family Trust
Mrs. George B. Turpin
Vallarta Supermarkets
Volentine Family Foundation
Mr. & Mrs. Ron Werft
Winslow Maxwell Charitable Trust
Mr. & Mrs. George Wood
The Wrather Family Foundation
Anonymous (2)

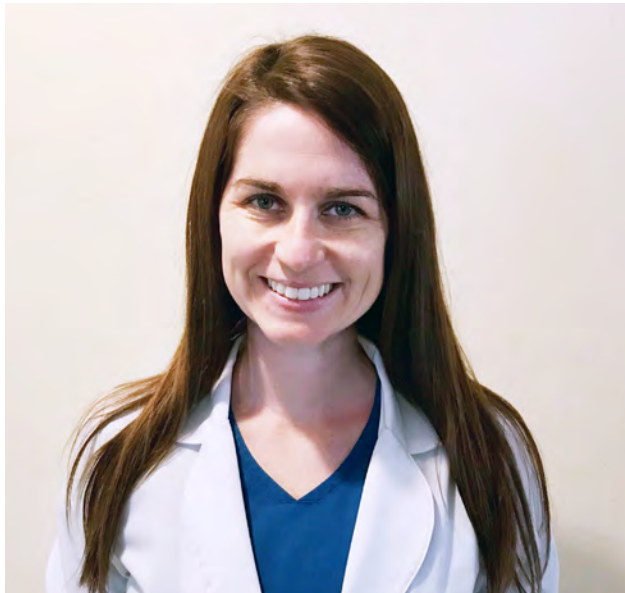
\$1,000 TO \$9,999

18 Space Control Squadron
Mr. & Mrs. Peter D. Adams
Agnes B. Kline Memorial Foundation
Mr. & Mrs. Brent R. Anderson
Anderson Financial Solutions & Insurance Services
Ann Jackson Family Foundation
ARCO
Mr. William E. Arnold
Mr. Lee Artmann
Mrs. Howard Arvey
Dr. & Mrs. Mounir R. Ashamalla
Mr. & Mrs. Jeff Barbakow
Mr. & Mrs. Walt Bazylewicz
Mr. & Mrs. Peter A. Bell
Mr. & Mrs. Donald K. Bennett
Pat Bensen
Dr. & Mrs. Edward S. Bentley
Mr. & Mrs. Philip Bilden
Dr. & Mrs. Edward E. Birch
Mr. & Mrs. Timothy K. Bliss
Mr. & Mrs. William G. Bloodgood Sr.
Dr. & Mrs. Mark A. Bookspan
Mr. James G. Bradburn
Mr. & Mrs. Doug Bratcher
Mr. & Mrs. Robert Bress
Mr. & Mrs. Robert Bricher
Mr. & Mrs. Jeff Bridges
Ms. Wendel M. Bruss
Mr. & Mrs. Danny Buist
Julia & James Burge
Mr. Harry Burger & Ms. Dawn Bridgeman
Ms. Darcie Burk
Mr. William S. Burtness
The California Nevada Credit Union League
Mr. John S. Carter
Mr. & Mrs. Timothy Casey

PHILANTHROPY SUPPORTS GREAT NURSING

Melissa Aldecoa Fayram serves in the medical intensive care unit at Santa Barbara Cottage Hospital. She is a Santa Barbara Cottage Hospital Foundation nursing scholarship recipient currently working on her Master of Science in Nursing at CSU Channel Islands and will graduate in summer of 2022.

Melissa’s connection to Cottage – and its philanthropy – have been present from the very start of her developing healthcare career. She served as a volunteer in the ED at Santa Ynez Valley Cottage Hospital, and she received a SYVCH Auxiliary Award scholarship in 2013 while pursuing her BSN degree.



“The Cottage scholarship has been so helpful during a stressful time balancing school and work. The scholarship has allowed me to progress through school quicker. I’m very grateful for the opportunities that Cottage and the MICU have provided for me to grow professionally as a registered nurse. I feel so grateful to be part of a community that values healthcare and values nursing. I look forward to being a nurse practitioner in this special community.”

MELISSA ALDECOA FAYRAM, BSN, RN, CCRN



EXCELLENCE IN NURSING EDUCATION

Supporting nurses and nursing education is a priority for Cottage Health and for its fundraising program.

- **The Gunner Scholarship** was established by Richard and Mimi Gunner to support nurse leaders pursuing advanced degrees. The first scholarships totaled \$107,000 and were awarded to 11 candidates for the 2020-2021 academic year.
- George Burtness is a longtime volunteer and supporter of nursing scholarships at Cottage. He has made a new \$1M pledge to establish the **George L. Burtness Endowment in Nursing Education**. When established, the new fund will support and promote excellence and innovation in nursing education in perpetuity. This gift celebrates a legacy of service and dedication to Cottage by Mr. Burtness and his family.
- Grateful patient, Mr. Angelo Mozilo, recently made a \$1M gift to create the **Phyllis and Angelo Mozilo Endowed Scholarship in Nursing**. This extraordinary gift celebrates a meaningful commitment to Cottage by supporting the education of promising nursing students who face financial challenges, yet remain committed to improving their life – and their community – by pursuing a career in nursing at Cottage.



To help or learn more about ways to support this program, contact LaRisa Chambers, Senior Gift Officer, Cottage Health, lchamber@sbch.org, 805-324-9930 office or 805-451-0678 cell.

REPORT TO THE COMMUNITY

Mr. & Mrs. Reid Cederlof Mr. & Mrs. Steven R. Charles Susan Christol-Deacon & Jim Deacon City of Goleta Mr. & Mrs. Alfred M. Clark Jr. Mr. & Mrs. Larry A. Coldren Mr. Victor L. Cole & Ms. Patricia K. Green Community Voices Dos Pueblos High School Community West Bank Ms. Joan N. Cook Mr. & Mrs. Brian Cordeiro Mrs. Lue D. Cramblit Ms. Lloyd G. Dallett Mr. & Mrs. Richard De Schutter Mr. & Mrs. Barry DeVorzon Mrs. Carol Diamond Mr. David Dietrich Ms. Lisa Dominguez Mr. & Mrs. Jeffrey Donahue Mr. & Mrs. James E. Drasdo Mr. William Dunlevy Ms. Sylvia Edney Mr. Julio Estrada Ms. Jan Everote Extra Life Mrs. Marie Fairbanks Mr. Gregory F. Faulkner & Ms. Tammera Gilman Mr. & Mrs. Christian Felipe Ms. Charlene Fernandez Ms. Elizabeth Filia Mr. & Mrs. Stanley C. Fishman Judge* & Mrs. Paul G. Flynn The Foster Family Dr. & Mrs. John W. Gainor GameStop Mrs. Pamela B. Gann & Mr. David Hardee Mr. Herbert Geary & Mr. Ken Heeg Mr. & Mrs. Edward George Dr. Andrew S. Gersoff & Ms. Julie Yamamoto Mr. & Mrs. Rolf B. Geyling Mrs. Arlyn Goldsby Gordon Ross Medical Foundation Mr. & Mrs. Martin A. Grano Mr. & Mrs. Donald W. Green Jr. Mr. & Mrs. James Grenier Ms. Teresa M. Guerra Mr. & Mrs. Norman Habermann	Habitat for Humanity of Southern Santa Barbara Ms. Pamela Halle The Hanover Insurance Group Harrison Hardware Mr. Robert K. Hassler Mr. & Mrs. Stanley C. Hatch Ms. Kristen Hawkes Vicki & Bob Hazard Healthcare Financial Resources Herbert & Gertrude Latkin Charitable Foundation Ms. Carol Hirashima Mr. & Mrs. Robert W. Hirsch Ms. Judith Hopkinson Mr. Jerome C. Horan Mr. Frank Huang Ms. Sandy C. Hunt Mr. Derk K. Hunter Ms. Audrey Hutton Mr.* & Mrs. Frederic B. Ingram The Iscovich Foundation Mrs. Betty L. Jahnke* Mr. Dow Jarvis Ms. Virginia E. Jarvis Mrs. Marian Jean Jessie Rees Foundation Mr. David A. Johannsen Mr. Brian S. Johnson Jordano's Dr. Steven Kallman & Mrs. Trudy Kallman Dr. & Mrs. Robert E. Kates Mrs. Joanne P. Kendall Kim Nails, Polish Nails, Phamous Cafe Kinecta FCU Mr. Kevin Kjoller Mr. & Mrs. James Klingbeil Ms. Sue Kresge Mr. & Mrs. Donald E. Lafler Mrs. Maryann E. Lange Mrs. Helgard Liechti Ms. Carla A. Long Ms. Sandra Lood Ms. Ann A. Lorimer Mr. & Mrs. James Lutz Mr. & Mrs. Steve Lyons Mr. & Mrs. John B. Mandle Mr. & Mrs. Robert E. Manger Mr. Jose Marcelo & Ms. Marisol Lopez Ms. Maria Martinez	McDermott Will & Emery Charitable Foundation Patrick & Esther McKinley Jacquie & Harry McMahon Ms. Thelma Mead Mr. & Mrs. John F. Meaney Ms. Randi K. Miller & Mr. Terry Cunningham Mr. Glen H. Mitchel Mrs. Claudia Mitchell & Mr. Larry Mitchell Mr. & Mrs. Bob Montgomery Ms. Lisa M. Moore Ms. Kim Morales & Mr. George Morales Morgan Stanley & Co. Dr. Peter L. Morris Mullen & Henzell, LLP Robert & Deborah Myman Mr. & Mrs. Robert C. Nakasone Mr. & Mrs. Michael Nissenson Mr. & Mrs. Michael Noling Nothing Bundt Cakes Dr. & Mrs. Thomas G. Ochsner Mr. & Mrs. Eric Onnen Mr. & Mrs. Steve Ortiz Mr. & Mrs. Jerold Oshinsky Ms. Grace R. Pacheco Mr. & Mrs. Ernesto Paredes Mr. & Mrs. Charles F. Patrick Mr. & Mrs. Ed Paul Mr. & Mrs. Richard J. Pearson Mr. Jack L. Perrin Dr. & Mrs. Joseph Carl Peus Mr.* & Mrs. Nelson Pfister Ms. Jacqueline Pierce Mr. & Mrs. John S. Pillsbury III Mr. & Mrs. Art F. Pizzinat Ms. Ann Linnett Pless Mr. & Mrs. James M. Pollak Dr. & Mrs. Richard S. Ponce Preston & Sterling Morton Fund QAD, Inc. Ms. Patricia K. Ramsey Mr. & Mrs. Daniel Reeves Ms. Sheri Ribeiro Richard C. Parsons Trust Mr. & Mrs. George D. Riemer Robert K. & Barbara J. Straus Family Foundation Mr. & Mrs. George T. Robson Mr. Stan Roden & Ms. Phyllis de Picciotto Rick & Regina Roney	Mr. & Mrs. Gerrold Rubin Ms. Mary Ryan Santa Barbara Bucket Brigade Santa Cruz Markets Santa Ynez Valley Hardware, Inc. Mr.* & Mrs. Richard L. Schall Mr.* & Mrs. Joe S. Scher Mr. Mark Scher Dr. Laura Schlessinger Dr. & Mrs. Mark P. Scott Mr. & Mrs. Peter Seaman Dr. Mary Secord Mr. & Mrs. John Seiter Ms. Leslie Sevier Drs. Mohammed & Ayesha Shaikh Mr. Arnold Shapiro & Ms. Karen Mackain Mr. & Mrs. Jim Shattuck Mr. & Mrs. Michael Shealy Ms. Joanne Shefflin Mr. Peter H. Shepard Mr. & Mrs. Michael Robert Sinclair Mr. Steve Siri Smart Office Interiors Ms. Trudy L. Smith Ms. Ashley Parker Snider Morris & Gloria Sobhani South Coast Emergency Medical Group, Inc. Mr. & Mrs. David W. Spainhour Mr. & Mrs. Eric W. Spivey Mr. & Mrs. Warren R. Staley Mr. John H. Steel & Ms. Bunny Freidus Mr. & Mrs. Erwin H. Straehley Mr. & Mrs. Ted P. Swift Mr. & Mrs. Brett Tande Mr. & Mrs. Richard Taniguchi Taqueria Lilly's, Inc. Dr. & Mrs. Dominic J. Tedesco Mr. & Mrs. Addison S. Thompson Mr. & Mrs. Robert A. Toledo The Towbes Foundation Kristin & Rick Tufvesson UCSB Phi Delta Epsilon United Networks of America California Rx Card USA Gasoline Paul & Lynne Valentich-Scott Mr. Philip Vaughn Dr. & Mrs. John A. Vowels Walgreens	Ms. Mary Lynn Walsh Dr. & Mrs. Yulun Wang Mr. John L. Warren & Dr. Bronwen Brindley Mr. W. W. Watling Mr. M. Stephen Weatherford & Ms. Lorraine M. McDonnell Mr.* & Mrs. Richard B. Welch Wells Fargo Private Bank Mr. & Mrs. Sean Williams William H. Kearns Foundation Mr. & Mrs. Alastair Winn Mr. & Mrs. William S. Wise Mr. & Mrs. Howell D. Wood Mr. & Mrs. George S. Writer Dr. & Mrs. Edmund M. Wroblewski Dr. & Mrs. Phillip J. Wyatt Tony & Jackie Yanez Linda Seltzer Yawitz Dr. & Mrs. Marc Zerey Dingyi Zhao Mr. Alex R. Ziegler Ms. Catherine A. Zimmer Mr. & Mrs. Steven Zola Anonymous (8)
\$250 TO \$999				
Aflac Mrs. Agatha D. Aldisert Ms. Gail Archer Ms. Lillian F. Ball Mr. Dayanand Barage Dr. & Mrs. Steven C. Barkley Ms. Marsha Baselice Mr. & Mrs. Roger Baumgarten Mr. John Beamis Mr. & Mrs. Arnold Bellowe Mr. & Mrs. Rod Berle Ms. Kim Berry Dr. Richard L. Berry Dr. & Mrs. Richard Beswick Mr. & Mrs. Ron Biscaro Mr. & Mrs. Tom Bolton Bosch Diagnostics Ms. Lisa Boses Mr. Victor Breen Mr. & Mrs. Charles Brown Mr. & Mrs. Matthew Burns Mr. Ronald E. Busch Mr. & Mrs. Charles Cain Mr. John J. Campilio Mr. Dean Carter Mr. & Mrs. Rudolph Castillo Sr.				

EXCELLENCE IN MEDICAL EDUCATION

The Santa Barbara Cottage Hospital Foundation established its first Endowed Chair in October 2020 honoring a visionary physician leader in medical education and two extraordinarily forward-thinking donors. Andrew Gersoff, MD, FACP, was named the **Craig Malley and Louise Stewart, MD, Chair of Graduate Medical Education**. The philanthropic investment of Craig Malley and Louise Stewart, MD, will allow Cottage to maximize opportunities to cultivate and train the best and brightest young physicians who will care for people throughout the Central Coast. Cottage’s long-standing Graduate Medical Program includes residencies in Internal Medicine, Radiology and Surgery. A new program, the Cottage Children’s Medical Center Pediatric Residency, will begin in June of 2022.

Endowed chairs for physician leaders enhance the reputation of the organization, which helps attract and retain renowned clinicians, educators and leaders essential to providing exceptional care to our community.

With this gift, Cottage has launched an important new endeavor to establish endowed chairs in critical specialties including neurosciences, pediatrics, emergency, trauma and critical care medicine. Endowed Chairs produce a steady stream of funding essential to support clinical excellence and the highest levels of patient care. They may also be named by the donor. If you would like more information, please contact Magda Stayton at 805-324-9929.



PLANNING A GIFT FOR THE FUTURE

Gifts of real estate and real property help advance life-saving medical care at Cottage Health and offer the donor significant financial and personal benefits, including:

- A charitable tax deduction on appreciated property
- Reduced income taxes and possibly estate taxes
- Bypass of capital gains tax
- Lifetime income
- Relief of property management responsibilities
- Satisfaction of leaving a meaningful legacy in our community

Philanthropic gifts can be designed as an outright gift or as a gift through estate planning. There are even options that allow the donor to make a future gift but continue to live in or use the property.

Cottage Health provides complimentary, confidential, no-obligation information on real property gifts.



For more information, contact Carla Long, Director of Planned Giving, 805-879-8987 or clong@sbch.org.

REPORT TO THE COMMUNITY

Ms. Catherine G. Cavaletto Mr. & Mrs. Brian Cearnal Mr. Robert Cerda Mr. Jim Chapman Ms. Kuei-Meei Chieng City National Bank City of Buellton Mr. & Mrs. Walter S. Clay Mr. & Mrs. Shaun Cleary Mr. & Mrs. Martin Cohn Cold Spring School Ms. Debra Collingwood Ms. Vanessa Connolly Crane Country Day School Ms. Christina Criswell & Mr. John Gilbert C-Suite Resources Mr. William Cushman Ms. Carol Davidson Dr. & Mrs. Mark Da Re Mr. Marc Dailey Deckers Outdoor Corp. Mr. & Mrs. Arie Dejong Mr. & Mrs. John Dent Mr. Salvatore DiMatteo Mr. & Mrs. Thomas H. Dittmer Mr. & Mrs. Dennis M. Doheny Mr. & Mrs. Craig J. Duchossois Ms. Charlotte Dullea Educational Development Corporation Mr. & Mrs. Daniel F. Ellis Ms. Zeina Ellis Federation of State Medical Boards of the U.S. Fell, Marking, Abkin, Montgomery, Granet & Raney, LLP Ms. Jennifer Ferrick Ms. Corina Figueroa Ms. Anne Flett-Giordano Ms. Tisha Ford Mr. & Mrs. Robert C. Forst Mr. & Mrs. Jacob Fuchs Ms. Danielle Gaines General Public, LLC Mr. & Mrs. Douglas Georges Ms. Joan Gerbasi Mrs. Anna Gillespie Glass House Farms Mr. & Mrs. Bruce Gorndt Ms. Barbara A. Gorton Mr. & Mrs. Philip E. Grant	Peter & Betty Gray Ms. Debra Gualtieri Mr. & Mrs. Olaf Guerrand-Hermes Mr. John Haan Ms. Sharon Hall Mr. & Mrs. John Harbourne Mrs. Andrea Hein Darryl & Michelle Hein Mr. & Mrs. Scott K. Heinz Ms. Jane Herner Mr. & Mrs. Milton Hess Mr. & Mrs. Lawrence & Maureen Hixon Jerry & Barbara Holt Hospice of Santa Barbara, Inc. Ron Hughes Ms. Janis Ingham Mr. & Mrs. John Jakubek Mr. & Mrs. Gerald A. Johnston Jonata School Community Citizenship Club Ms. Ruth Kahl Robert Kanard, MD Ms. Wendy Kaufmann Ms. Darcy Keep Ms. Jennifer Kelly Dr. Drew G. Kelts & Ms. Connie Wilson Ms. Janet Kim Ms. Carrie Kirchner Mr. Richard Kjeldsen Dr. & Mrs. Alex Koper Mr. & Mrs. Jim Kruidenier Mr. Michael J. Kullik Mr. & Mrs. Richard Lamb Elinor & James Langer Larry's 8 Day Auto Parts Mr. Jean-Louis Le Renard Mr. & Mrs. Steven W. Lew Janet & Joy Lucas-Husband Ms. Sarah Lukenbill Ms. Liz Lundquist & Mr. Doug Hamilton Mr. & Mrs. Calvin D. Marble Mr. & Mrs. Robert P. Marshall Jr. Ed & Josie Martin Mrs. Thoma Martinov Marymount of Santa Barbara Mr. & Mrs. Frank Mattoon Mr. & Mrs. Gary B. Maxwell Ms. Caitlin McAvoy Mr. John McCarthy	Dr. & Mrs. Edward J. McGinn Ms. Vicki McPhail Mr. David J. Meissner Mended Hearts Chapter 22 Mile High United Way Mr. Gregory Mohr Ms. Pilar Montgomery & Mr. John Celmins Ms. Reylene Morales Mr. & Mrs. James Morouse Mr. & Mrs. Edward Mullen Mr. & Mrs. Neil Myers Mr. & Mrs. Kevin L. Nelson Network for Good Network Medical Neurology Associates of Santa Barbara Nordstrom Ms. Laura Ogden Ms. Gamble Parks Patagonia Mr. Rajni R. Patel & Dr. Pramila R. Patel Ms. Lanette R. Perry Mr. Eric Peterson & Ms. Janet A. Greeley Ms. Rebecca Pred Procore Technologies Ms. Anne Cooper Ready Ms. Debra J. Reed Mr. & Mrs. Mark C. Rick Mrs. Robin Rickershauser Ms. Muriel Ridland Victor Rivera Ms. Tonya Lynn Roberts Dr. Anne O. Rodriguez & Mr. Marcelo Rodriguez Ms. Charity V. Romero Mr. Mark Rose Mrs. Muriel Ross Dr. & Mrs. Rottenberg Dr. & Mrs. Clifford J. Ruddle Mr. Collin Russell Ms. Patrice P. Ryan Mr. & Mrs. Sheldon Sanov Santa Barbara HR Association Santa Barbara Neighborhood Clinics Santa Barbara Woodfire Catering Mr. & Mrs. Joe Sapienza Mr. & Mrs. Lee Scharfeld Mr. Otto Schleich Mr. David Schlosberg	Ms. Lorin Schneider SESLOC Federal Credit Union Mr. & Mrs. Les Shapiro Shell Dr. & Mrs. Harvey Silverberg Mr. & Mrs. James B. Skaggs Mr. & Mrs. James B. Slaughter Ms. Elizabeth Smith Ms. Janet B. Spector Ms. Brenda Stanley Magda & Larry Stayton Mr. & Mrs. Robert Sternin Ms. Carol Gemberling Stewart Ms. Dawin Strelow Mr. & Mrs. Bill Strong Mr. & Mrs. Carl F. Stucky Mrs. Jean Svoboda Mr. Eric Swain Mr. James H. Swartchild Mr. John Tang & Ms. Julia Tang Mr. & Mrs. James S. Taylor Ms. Tamara Teitelbaum Ms. Pamela Tinker Dr. Matthew V. Tirrell & Ms. Pamela LaVigne Mr. Tony Tonkin Mrs. Anne Smith-Towbes Ms. Sufung F. Tsai Mr. & Mrs. Bob K. Tuler Mr. Robert A. Turbin & Ms. Carol Vernon Tom Turner Valle Verde Retirement Community Mr. Scott Vilander Mr. & Mrs. William J. Villa Mr. & Mrs. Donald E. Vincent Allison & Gary Viramontes Mr. & Mrs. Michael Vogel Ms. Michele Walker Ms. Anne Marie Weber Mr. Kevin Whelan The William A. Davidson Family Trust Mrs. Joy H. Winer Mr. Gary Yoshimura & Ms. Sandra Chan Anonymous (8)	Mr. Ramon Alcerro Mr. & Mrs. Scott D. Alman Alpha Phi Foundation Ms. Romelia Alvarado American General Media Mr. Adrian Amparo Mr. & Mrs. Don Amsden Ms. E. Joyce Anderson Mr. & Mrs. Joseph E. Andrade Ms. Patricia Azain Mr. Steven Bachman Mr. Bryan M. Bahman Ms. Sandra Baird Mr. & Mrs. Curtis N. Bardsley Robert Barnes, MD Mr. & Mrs. Eric Baumgarten Ms. Rosalie G. Bean Richard H. Beiden Mr. & Mrs. Jules Bender Mr. Wayne Benner Mr. Brad Berch Mrs. Myrna Bernard Ms. Rhonda Bernstein Ms. Christina Bird-Holenda Ms. Jane Bolton Ms. Cherie Bonazzola Mr. & Mrs. Mario A. Borgatello Dr. Linda Boynton De Sepulveda Ms. Cindy Braden Mr. & Mrs. William J. Brennan Mr. Patrick Brackett Mr. & Mrs. David H. Brown Mr. Dempsey Brown Mr. Frank S. Brownie Ms. Whitney Bruice Mr. & Mrs. Douglas Bube Mr. & Mrs. Charley Burgett Mr. James Buster Ms. Bruna Byrne Mr. & Mrs. Isidro Calderon Mr. & Mrs. Marvin S. Carlis Ms. Laurie Carlyle Mr. Paul Castleberg Mr. & Mrs. Mike Cavalletto Ms. LaRisa Chambers Ms. Jane Choe Mr. Walter D. Clapp Ms. Gaylen M. Clark Dr. & Mrs. John A. Clark Ms. Martha J. Clark Ms. Nancy Clark
			\$100 TO \$249 Ms. Robin Achenbach Ms. KC Adornetto Advanced Vision Science, Inc.	



DRIVING CHILDREN’S HEALTH

Thanks to the generosity of our Childrens Miracle Network Hospitals (CMNH) partners and caring community donors, Cottage Children's Medical Center has a new 'ICU on wheels.' This new vehicle is a specialized ambulance to transfer newborns and children from throughout the region to receive the advanced medical care provided at Cottage Children's Medical Center. With each transfer, a team including a nurse, respiratory therapist – and, if the baby is very small, a physician – provides care on board during transit. For newborns, the ambulance is equipped with isolettes, which control temperature, humidity, and oxygen levels throughout this important first journey.



For more information about CMNH and supporting Cottage Children's Medical Center, contact Ann Peyrat at a Peyrat@sbch.org, 805-879-8743 office or 805-698-0763 cell.



The \$200,000 cost of this special ambulance has been provided to Cottage through the Children's Miracle Network and its retail sponsors including Costco, Panda Express, Radiotón, Credit Unions for Kids, Walmart, Ace Hardware, Dance Marathon and Rite Aid, as well as individual donors. Staff and maintenance of the ambulance is an ongoing expense.



BUILDING A NEW HOSPITALITY HOUSE

To care for patients and their families, Cottage Health provides accommodation for families who need lodging near the hospital and who have been referred by Cottage's medical social services, case management staff or spiritual care team. Frequently, these families have a newborn in the Neonatal ICU, they've traveled from out of town or they need intensive guidance and training time to learn how to sustain their child's care. The requests have exceeded the current space at the Little Cottages. Fortunately, building is in progress for a new Hospitality House which will double capacity, and Cottage Health will be able to accommodate more than 4,000 requests from families each year. These Hospitality House apartments will have children's play equipment and social areas, and will offer support and meals to families to help ease the stress of the hospital stay.

REPORT TO THE COMMUNITY

Mr. & Mrs. Marshall Claytor	Ms. Eva & Ms. Helen	Gail & Larry Hess	Mrs. Sheila Lodge	Ms. Doedy Orchowski
Mr. & Mrs. John E. Clement	Mr. & Mrs. Donald Eversoll	Mr. & Mrs. Eric Hochberg	Mr. Charles Loepkey*	Ms. Maria Ordaz
Ms. Nancy Cohen	Mr. & Mrs. Howard D. Fabrick	Ms. Shawn Hodges	Mr. & Mrs. Stephen Long	Mr. & Mrs. Rodolfo P. Osano
Mr. & Mrs. Thomas B. Collinson	Mr. Jeff Farmer	Mr. Fred Hofmann	Ms. Nelida Lopez-Amirante	Mr. & Mrs. Arthur D. Pamplona
Mr. Eric Comport	Ms. Lisa Feinstein	Mrs. Edith Hollister	Mr. Fred Loquasto III	Ms. Michele Panconi
Ms. Brea Cook	Mr. Frederick P. Fellows	Ms. Caroline Hooker	Mr. & Mrs. William L. Mace	Ms. Debra Patetzick
Ms. Judith C. Cooley	Bill & Susan Ferguson	Mrs. Diane M. Huerta	Ms. Ann MacFarlane	Mr. David Paul
Ms. Aida Cordero	Mr. Sylvester J. Fior Jr.	Mr. & Mrs. Robert H. Hull	Mr. & Mrs. Thomas A. Mackey	Mr. Rex Pay
Ms. Wendy Cork Keyzer	Ms. Carmen Flores	Mr. & Mrs. David E. Hybert	Ms. Viviane Madajian	Mr. Laurence Pearson & Ms. Carol Hawkins
Megan Cotich	Mr. Ramon Flores	IHOP	Mr. Mark E. Mahler	Ms. Jean M. Perloff
Susannah & Shawn Couture	Mr. & Mrs. Ryan J. Foster	Ms. L. Johanna Israel	Ms. Cassie Maino	Ms. Ann M. Peyrat
Ms. Marilyn Craigie & Mr. Jack Craigie	Mr. & Mrs. Ron Fox	Mr. & Mrs. Donald A. Jackman	Mary Lynn & Richard Mallen	Ms. Barbara Pieper
Ms. Debra Crain	Ms. Pessia Fygenson	Mrs. Joan E. Jacobs	Ms. Sharon Manges	Ms. Susie Pierson
Ms. Margaret Crocco	Ms. Angela Gallagher	Ms. Miroslava Jankovic	Ms. Lois Marella	Mr. Steven Polevoy
Ms. Denise Crosby	Mr. & Mrs. Joe P. Gallegos	Ms. & Mr. Josephine Jarvis	Mr. & Mrs. Fred B. Marsh	Ms. Roxanne Pottenger
Ms. Tia Crosland	Mr. Michael Garley	Ms. Sharon Jayne	Mr. Steve Marsh	Mr. Peter Poulson
Ms. Jill Cunningham	Mr. David L. Gersh	Ms. Teresa Johnson	Ms. Peggy A. Martens	Ms. Sarah Powers
Mr. & Mrs. Thomas H. Dale	Dr. & Mrs. Ron Gibbons	Mr. David P. Jones	Ms. Cindy Martinez	Ms. Patricia M. Pung
Ms. Carla Dantonio	Mr. & Mrs. Don K. Giles	Mr. Glenn Jordan	Ms. Linda Mathews	Mr. & Mrs. Jerry C. Quintiliani
Ms. Gwen Dawson	Mr. & Mrs. Mike Giles	Kaplan Early Learning Company	Mr. & Mrs. Frank Mattoon	Ms. Amy Ramos
Ms. Pamela Deal	Ms. Wendy Gillio	Dawn & Joel Kaufman	Ms. Nancy May	Mr. & Mrs. David R. Randolph
Mr. Peter H. Debruynkops	Mr. & Mrs. Robert S. Gleason	Ms. Serela Kay	Ms. Hilary Maybank	Mr. & Mrs. Robert W. Rau
Ms. Lynn Deetz	Ms. Arlette Godges	Ms. Louise C. Keeler	Ms. Sue McAdams	Mr. & Mrs. Steven Reden
Mr. Leno DeLorenzi Jr.	Mr. Leon J. Gold	Mrs. Diane Kees	Ms. Keiko McConnell	Mr. & Mrs. Russell Redmond
Mr. & Mrs. Craig N. Demott	Erick & Patti Gonzalez	Mr. James P. Kennett	Ms. Jennifer B. McGovern	Mr. Albert Reid
Ms. Ellen Denholtz	Mr. & Mrs. Frank Goss	Mr. & Mrs. John F. Kestel	Ms. Kathleen McGuire	Linda & Dale Reimer
Ms. Dasha Depew	Mr. & Mrs. Jack Gould	Mr. & Mrs. Sun S. Kim	Ms. Meredith McMinn	Mr. Tom Reynolds
Ms. Joan Dewberry	Mr. Donald L. Grainger	Ms. Virginia L. King	Ms. Jane G. McMullen	Mr. David C. Ridenour
Mr. Michael Diesman	Ms. Wendy K. Gray	Mr. Francisco Kole	Mr. Dominic Metzger	Karen & Ken Riebe
Mr. & Mrs. Hal A. Dill	Mr. Richard Grimes	Mr. & Mrs. Michael S. Korney	Ms. Marilyn E. Meyr	Mr. Melvin Robbins
Dioji K-9 Resort	Mr. & Mrs. J. Robert Grubb	Mr. Philip Kreter	Mr. & Mrs. Ed Miller	Mr. Chris Roderick
Mr. David Dolotta	Mr. & Mrs. Michael R. Gunner	Mr. & Mrs. Richard Krull	Ms. Brigid Mills	Ms. Donna Rogers
Mr. & Mrs. John E. Doner	Ms. Charlotte Gutierrez	Mr. Steven Kulchin	Mr. & Mrs. Mark Minnis	Jacy Romero
Mr. Xi Dong	Ms. Rita Haake	Ms. Sasha Kusel	Mr. & Mrs. R. Thomas Mitchell	Ms. Socorro Rosales
Mr. Gregory Downs	Mrs. Margaret A. Hamilton	Ms. Gretchen L. Jones	Tom & Kim Modugno	Ms. Sonia Rosenbaum
DQ Orange Julius	Mr. William T. Hanna	Mr. Carl V. Laubacher	Mr. Eugene A. Moggia Sr.	Susanne Rouse Family
Mr. & Mrs. Stephen C. Drummy	Ms. Laurel P. Hansch	Mr. Garry Lawrence	Ms. Valery Moorhead	Mrs. Gloria Z. Rubin
Ms. Judy Duncan	Lorraine S. Hansen	Mr. & Mrs. Gregg A. Leach	Mr. Mark V. Mullenary & Ms. Julie Artoux	Ms. Irene Russo
Ms. Marilyn Ebbin	Gary D. Hanson, MD	Ms. Alysha Lee	Dr. & Mrs. Edward Murphy	Mr. Russell Russo Levasseur
Ms. Barbara L. Edmison	Ms. Shanna Hargett	Mr. Louis Legaspi	Mr. & Mrs. Douglas G. Murray	Mrs. Angela M. Ryan
Mrs. Barbara L. Edmiston	Ms. Barbara Harison	Ms. Kim A. Lemon	Mrs. Raymond King Myerson	Ms. Beverly Ryan
Mr. & Mrs. Andreas Eggendorfer	Ms. Ruthmarie S. Harpham	Ms. Lisa Levenson	Ms. Carol A. Nelson	Ms. Arlene Sanford
Ms. Leslie Ekker	Mr. J. Jason Harvie	Mr. Barry E. Levine	Dr. & Mrs. Pierre M. Nizet	Santa Barbara Museum of Natural History
Ms. Pamela Elliott	Tadao & Kumi Hashimoto	Mrs. Margaret E. Levine	Ms. Ashley Ochi	Mr. & Mrs. Stephen Sassen
Mr. William Eng	Dr. Peter Lee Hasler & Dr. Elizabeth Downing	Mr. Robert Levitt	Ms. Laurel O'Connor	Wendelin W. Schaefer, MD
Mr. Matthew English	Ms. Lisa Hawkins	Ms. Fima Lifshitz & Dr. Jere Lifshitz	Mr. Donald D. Olson	Mr. Richard Schiada
Mr. Robert A. Erickson	Healthcare Business Media	Ms. Chih C. Lin	Dr. & Mrs. Robert W. Olson	Mrs. Susanne I. Schiff
Ms. Patricia A. Ericson	Ms. Lilly Helmuth-Malone	Mr. Paul Livacz	Ms. Dina Ontiveras	
	Mr. Michael Hendrickson			

TIARA BALL

TIARA CAMPAIGN
BREAKS RECORD

While the annual gala was paused in 2021 due to the pandemic, Cottage care never stops. The 2021 Tiara Campaign volunteer committee and many generous donors set a new record by raising over \$650,000 in vital funds to ensure everyone in the community has access to exceptional emergency, trauma and critical care.

Special thanks to past and current Tiara Ball chairs who reunited to lead the campaign: Alex Nourse, Betsy Turner, Jelinda DeVorzon and Debbie Mackall.

Since 2005, the Tiara Ball has raised \$6,395,240 to help treat thousands of children and adults who are critically ill or injured. Santa Barbara Cottage Hospital is able to provide the highest quality care in a state-of-the-art facility in large part because of the generosity of so many within our community.

SAVE THE DATE
TIARA BALL | APRIL 8, 2022



TIARA BALL
LEADERSHIP DONORS

TIARA

The Bollag Family
Christine and Reece Duca
Robert and Alexandra Nourse
Diana and Simon Raab
Patty and Nick Weber

HEART

Brittingham Family Foundation
Chivaroli & Associates, Inc.
Brett Matthews and Ginger Salazar / Kate Farms
Lady Leslie Ridley-Tree

EMERALD

Marcia and John Mike Cohen
David and Anna Grotenhuis
Santa Ynez Band of Chumash Indians

RADIANT

Bob Andrews and Margaret Wilkinson
Audrey Hillman Fisher Foundation
Tim and Louise Casey
Central Coast Critical Care Associates
Epic
Connie Frank and Evan Thompson
Griffith & Thornburgh, LLP
Jordano's
Montecito Bank & Trust
Betsy and Chip Turner / Straus Family Foundation
Linda and Doug Wood
Xtend Healthcare

SOLITAIRE

Brent and Sue Anderson
Tim and Holly Armour
Gayle D. Beebe
Ginny and Tim Bliss
William and Diane Bloodgood
Mario and Judith Borgatello
Becky and Rod Brown
Tom and Caitlin Brown
Susan Christol-Deacon & Jim Deacon
Community West Bank
Cox Communications
Jelinda DeVorzon
David Dietrich
Anne and Jeffrey Donahue
Greg and Andrea Dunlevy
Marie Fairbanks
Harold McAlister Charitable Foundation
Dr. Angel and Lisa Iscovich
K&L Gates
Steven and Trudy Kallman
Melinda Goodman Kemp
Bobbie and John Kinnear
Don and Sherry Lafler
Christophe and Jeanette Le Renard
The Lood Family
Natalie Orfalea Foundation
Susan and Jim Neuman
Nancy Nielsen
Roberta Nielsen
Ralph and Cathy Quijano
Susannah E. Rake
Sheri Ribeiro
Ariella Riva Ritvo-Slifka and The Alan B. Slifka Foundation
Santa Barbara Foundation
Sharol and Wayne Siemens
SWA Architects
Theodore and Rebecca Swift
Robert Toledo
Anne S. Towbes
Vizient
Willis Towers Watson

SPECIAL THANKS

Fred Brander and The Brander Vineyard
Robert and Susan Lief and Lief Ranch

Ms. Melissa Schmitt
Mr. Russell Schmitt
Ms. Linda Schmitz
Ms. Elizabeth Schodorf
Ms. Nan Schooley
Ms. Dawn Schroeder
Mr. Robert Schurle
Ms. Angela Scott
Mr. & Mrs. Vanbenschoten B. Scranton
Mr. Bernad J. Seder & Ms. Liliyan C. Cuttler
Mr. Steven Seibert
Ms. Theresa Selman
Ms. Natalie Shabtai
Ms. Marian Shapiro
Mrs. Millie Shatrousky
Ms. Charlotte Shaw
Mr. George Shaw
Mr. Richard Shiffar
Ms. Michele R. Shipp
Mr. Deacon Shorr
Ms. Cynder Sinclair
Ms. Stacy Sliwinski
Mr. Gordon F. Smith
Ms. Lisa Smith
Mr. Wilhelmine E. Smith
Ms. Jeneva Sneed
Dr. Hugh P. Snyder
Mr. Jamie Sonsini
Mr. Edward P. Soto
Mr. Greg Soulages
Speedway
Mr. & Mrs. Gordon R. Statler
Mr. Mark A. Steigler
Ms. Jill Stein
Ms. Elizabeth A. Stivers & Mr. Gary M. Simpson
Ms. Grace Stori
Mr. Fred W. Strickler
Ms. Sharlot R. Sunshine
Ms. Maureen Taikowski
Ms. Esther Takacs
Mr. Gerry Tallman
Ms. Joanna Tang

Mr. & Mrs. Ken Tarlow
Verta A. Taylor, PhD
Mr. Michael Theobald
Mr. Dennis Thompson
Susan Thompson
Mr. & Mrs. Willie C. Tinnin
Mr. Richard Tiscareno
Ms. Sophie Foot & Mr. David Tobin
Mr. Howard Toboco
Today's Nails
Mr. & Mrs. Benny Torres
Ms. Natalie Uribe
Dr. Barnard Valeska
Ms. Gerda B. van de Bunt
Mr. Robert K. Vance
Ms. Annalisa Varni
Ms. Natalia Varni
Ms. Priyanka Varni
Mr. Jesus Vazquez & Ms. Liliana Vazquez Suarez
Raquel & Mario Vazquez
Ms. Ernestina Vega & Ms. Mariana V. Lopez
Justin Villa
Ms. Sarelyn Wager
Ms. Cheryl L. Wagonhurst
Mr. & Mrs. Harry Warner
Ms. Eleanor Watanabe
Mr. & Mrs. Paul A. Weiss
Mr. & Mrs. Tom Wentling
Ms. Roe Anne White
Ms. Nicole Wichowski
Mr. William S. Wilcox
Ms. Barbara A. Willett
Mr. & Mrs. Ron Williams
Mr. & Mrs. John M. Williams
Mr. Ken Wilson
Mr. Robert H. Winkler
Mr. Eugene J. Wiskowski
Ms. Tara Wood
Ms. Trudy Yost
Ms. Maria Zate
Mr. & Mrs. Donald Ziehl
Zotec Partners, LLC
Anonymous (11)

*deceased

IN HONOR OF

All Healthcare Workers
All the Children & All the Newborns in NICU
Earl & Leslie Armstrong
Dr. Richard Belkin
Mica Bergman
Dr. Chad Burgoyne
Dr. Kevin Casey
Dr. Cogent & Dr. Shenoda
Dr. W. Charles Conway
COVID Nursing Staff
Daniel's Fight Against COVID-19 Swim
Randall Day & Bill Hurlbaugh
Deja DeMarco
Emergency Dept. & Nutrition Staff
Steve Fellows
Limeo Fernandez
Diana Franklin, Sara Chong & Fred Chong
Dr. Priti Gagneja
The Gallagher Family
Dr. Salvatore Garafalo
Cassidy Bonnie Gordon, RN
Gerald Gorton
LaRae "Rogne" Hansen
Paul W. Hartloff Jr.
Andrew Haslem
Dr. William Heringer
Dr. Michael Hogan
Dr. Benjamin Howard
ICU Nurses & Therapists
Fritz Ingram
Hollye & Jeff Jacobs
Dr. Stephen Kaminski & Dr. Jeffrey Gauvin
The Klingbeil-Weis Family
Knapp College of Nursing
Professor Frederick F. Lange
Carolyn Lauderdale
Lauren, RN. & Maria, PCT
Dr. Christophe Le Renard
Daniel Marella
Waylon McCoy
Dr. Babji Mesipam
Sara Murphy
Nurses on National Nurses Day & My Retired RN Parents

Nurses, Technicians, Administrators & All Staff & MDs at Cottage
Nursing Staff
Ann & Donald Petroni
Christie Philip, RN
Dean Prendergast
Lady Ridley-Tree
Victor Ean Rivera
Victor H. Rust
Sansum Urgent Care
Geoff, Kelly & Ellie Schaller
Chelsea Schmid, RN
Eric Seale
Dr. Rohit Sharma
Dr. Mark Silverberg
Mark Stori
Brett Tande
Joanna Tang
Dr. Robert Taylor
Annie Varni
Ron Werft, Richard Afable, Marshall Moncrief, Katy Bazylewicz, & Lisa Moore
Jacob Wilen & 5 Bath Team
Glen & Lisa Wysel
Dr. Zauner & Staff
Dr. & Mrs. John Zemjanis

IN MEMORY OF

Norman Kjaer Anderson
Howard Arvey
Sally Ann Bane
Shari Barnes
Vivian Beutel
Allyson Buist
Helen Casanova
Adam Shawn Clayton
Mary Ann & Joseph Cooper
Esther Donahue
Christiane & Ali Ekker
Charles W. Fairbanks Jr.
Mel & Katherin Gemberling
Ann & Carl Green
Maria C. Guerra
Dr. Van Hamilton
Noel Hansch
Roger Higgins
Dr. E.J. Jahnke
Donald C. Jayne
Mary Alice Jennings

REPORT
TO THE
COMMUNITY

Noel Johnson
Bill Kahl
Kayla
David Paul Kirchner
Marcie Kjoller
Agnes B. Kline & Ford G. Kline
Dr. Charles A. Liechti
Mike Lorimer
William Lund
Felix Malbas Jr.
Alice Furman Martin
Josephine Rose Moggia
Jayne Sevier Mouchet
Agnes Patten Parma
Kathleen Polischuk, RN
Dr. Margaret S. Ray
Ted Reed
Harvey Robbins
Katerine C. Ruiz-Rust
Jim Ryan
Andre M. Saltoun
Linda Mary Schmitz
Dr. Dan Secord
Charlene Shaw
Don Stewart
Phil Swiecone
Wilfried Thurnher
Sarina Vogel
Theresa Ann Ward
Dement Weaver
Peter Winn
William D. Wright
Jane Zonka



To learn about 2022 Tiara Ball sponsorship opportunities, please call Esther Takacs at 805-879-8985.



RESPONDING IN EMERGENCIES

With the COVID pandemic, everyone was learning together about this virus we'd never seen before. For hospitals, the emergency loomed larger, because the community was at great risk, and the healthcare staff providing care were on the frontlines, facing risks no one yet fully understood. They relied on training and preparation – and sometimes sheer grit – to serve, to care, to save lives on the toughest of days.

The Cottage Emergency Response Fund (CERF) – established through the generous support of community members along with our own employees – helped the hospital adapt and:

- Acquire vital equipment and supplies, including COVID Response Kits for patients who test positive for the virus. The kits help patients recover safely at home
- Provide emergency preparedness training and tools to respond to the pandemic and stand ready for future situations
- Assist employees facing COVID-related financial hardships with housing, food, childcare, transportation and other basic needs

Total giving to the Cottage Emergency Response Fund now exceeds \$2.9M and has helped save countless lives.

“During this challenging time, our community has come together like never before. We are grateful for the skill and compassion of so many caregivers, the extraordinary support of hundreds of community volunteers, and the generosity of our thoughtful donors.”

**RON WERFT, PRESIDENT & CEO
COTTAGE HEALTH**

SANTA BARBARA COTTAGE HOSPITAL FOUNDATION ENDOWED FUNDS

Endowment gifts allow a donor's charitable goals to continue into the future through the creation of a perpetual fund that provides ongoing support for priority programs and needs.

Nursing Scholarship Endowment Fund

Dreier Family Endowed Scholarship in Nursing

David and Margaret Nichols Endowed Scholarship in Nursing

Phyllis and Angelo Mozilo Endowed Scholarship in Nursing

Richard and Mimi Gunner Nursing Scholarship Endowment Fund

McAlister Family Children's Healthcare Endowment Fund

Starke Cottage Children's Medical Center Sustaining Fund

Craig Mally and Louise Stewart, MD Endowed Chair of Medical Education

Manitou Endowment for Graduate Surgical Education

Harry E. Howland Pediatric Endowment

John and Wilma Quinton Pediatric Oncology Endowment

Mary and Richard Compton Endowment for Medical Excellence and Innovation

Cottage Children's Hospital “Best Purpose” Endowment Fund

Dana White Endowment for Excellence in Education

George L. Burtness Endowment for Nursing Education

GOLETA VALLEY COTTAGE HOSPITAL FOUNDATION

2020 BOARD OF TRUSTEES

Eric Seale, Chair
Peter Brown, Vice Chair
Tony Vallejo, CPA, Treasurer
Anne Pazier, Secretary
Jim Knight, Immediate Past Chair
Kirsten Zimmer Deshler
Mark Ingalls
Donna Lewis, EdD
Antoinette McCauley
John McFadden
Martin Pourd
Julio Soares, MD
Jack Turney

SENIOR PHILANTHROPY OFFICER

Tanya Gonzales

\$500,000 OR MORE

The Cavalletto Charities Foundation

\$50,000 TO \$99,999

Mr. & Mrs. Reid Cederlof
Elaine F. Stepanek Foundation
Eunice Stephens & Terry Shutt

\$25,000 TO \$49,999

Ms. Valerie Fuette
The Wood-Claeysens Foundation

\$10,000 TO \$24,999

Mr. Jim J. Johnson
Cox Communications
LPGA Amateur Golf Association

\$1,000 TO \$9,999

Aesthetic Center for Plastic Surgery
Dr. Michele A. Armet
Arndt Construction, Inc.
Dr. & Mrs. Mounir R. Ashamalla
Mr.* & Mrs. John Bennett
Dr. & Mrs. Gary M. Blum
Mrs. Clara Brown
Peter Brown & Suzanne Tomlinson-Brown
Brownstein Hyatt Farber Schreck LLP
Dr. John Carbon & Dr. Louise Clarke

Mr. & Mrs. Timothy Casey
Coastal Copy
Susan & Jim Deacon
Emmett Foundation
Dr. & Mrs. Richard E. Fulton
Mr. & Mrs. James Grenier
Mr. & Mrs. Mark Ingalls
Mrs. Betty L. Jahnke*
Ms. Elizabeth L. Kilb
Mr. & Mrs. James J. Knight
Mr. & Mrs. Robert T. Knight
Mr. Ron Lafrican
Mrs. Maryann E. Lange
Mrs. Bessie D. Lombardo
Montecito Bank & Trust
Pacific Western Bank
Mr. & Mrs. William Peeples
Pueblo Radiology Medical Group
Radius Group Commercial Real Estate
Santa Barbara County Federal Credit Union
Santa Barbara Internal Medicine Group
Mr.* & Mrs. Richard L. Schall
Mr. & Mrs. Mark Schiffmacher
Mr. & Mrs. Eric Seale
South Coast Emergency Medical Group, Inc.
Kristin & Rick Tufvesson
Mr. & Mrs. Jack Turney
Vizient Foundation
Dr. & Mrs. John A. Vowels
Walpole & Co., LLP
Mr. & Mrs. Ron Werft
Mr. & Mrs. George S. Writer
Dr. & Mrs. Phillip J. Wyatt
Zyris, Inc.

\$250 TO \$999

Mr. & Mrs. Peter D. Adams
Ms. Lillian F. Ball
Mr. Nicholas P. Bartolini
Mrs. Barbara Bennett
Mr. & Mrs. Thomas Brooks
Ms. Catherine G. Cavaletto
Ms. Gennine D'Ambra
Stephen & Lee Drummy
Ms. Lynne E. Halterlein

Mr. & Mrs. Douglas R. Hayes
Mr. & Mrs. Jim Kruidenier
Mr. & Mrs. Jeff Kruthers
Mr. Robert Kvaas
Mr. Erik Lucero
Mr. & Mrs. Charles Nardo
Mr. Stephen Petersen
Mr. & Mrs. Martin Plourd
Mr. & Mrs. Robert W. Rau
Mr. & Mrs. Bill Rosen
Ms. Pammela Savage
Mr. Wilhelmine E. Smith
Mr. & Mrs. Donald E. Vincent
Mr. Ted W. Wuerthner
Anonymous (3)

\$100 TO \$249

Mr. & Mrs. Thomas D. Allin
Mr. & Mrs. Ronald G. Aubry
Ms. Patricia Azain
Mr. & Mrs. Charley Burgett
Ms. Pamela Kay Caballero
Sam & Ginny Capra
Mr. & Mrs. Rudolph Castillo Sr.
Ms. Debra Collingwood
Ms. Lynne Corley
Ms. Shirley Dettmann
Mr. Nicholas Dewey
Ms. Carol F. Donner
Ms. Maureen S. Dougherty
Ms. Barbara E. Dunaway
Ms. Arvilla Eichinger
Mr. & Mrs. Daniel F. Ellis
Edith Elson
Mr. Doug English
Ms. Cinda Erdman
Mr. & Mrs. David L. Fayram
Ms. C. Gail Fischer
Mr. & Mrs. Charles* Foley
Ms. Katherine Ford
Mr. Peter B. Franett
Mr. Gil Garcia
Ms. Marguerite Gates
Ms. Dodi Gauthier
Carol A. Geer, PhD
Ms. Irene P. F. Gin
Mr. Mark Giroux

Tanya & Bob Gonzales
Mr. & Mrs. Don A. Grimm
Mrs. Margaret A. Hamilton
Mr. & Mrs. Larry Hansen
Lorraine S. Hansen
Ms. Greta Heiss
Mrs. Edith Hollister
Mr. Rodney G. Iwata
Mr. Glenn Jordan
Mr. & Mrs. Lowell H. Koski
Ms. Barbara A. Lane
Don & Carol Lauer
Donna Lewis, PhD
Dr. & Mrs. James W. Markham
Mr. & Mrs. Michael McGinnis
Mrs. Jessie L. McMillan

Ms. Carmen Meza
Stephanie Muir
Mr. Philip Norvell
Dr. & Mrs. Robert W. Olson
Mr. Walter Orso
Ms. Nancy A. Peschek
Ms. Patricia Richardson & Ms. Susan Allenson
Ms. Elizabeth P. Robinson
Diane & David Russell
Mrs. Ramona R. Salazar
Mr. Otto Schleich
Dr. & Mrs. Richard B. Shelton
Mr. & Mrs. Bob Shull
Dr. & Mrs. Harvey Silverberg
Ms. Margaret A. Smith
Ms. Elizabeth A. Stivers & Mr. Gary M. Simpson
Ms. Gertrud Straede
Mr. & Mrs. Paul F. Strittmatter
Mr. Randall B. Sunday
Ms. Allyson Toscher
Mr. Paul R. Van Leer
Mr. & Mrs. Michael Vogel
Mr. & Mrs. Craig Y. Wakamiya
Mr. Ronal L. White
Mrs. Charlotte A. Widling
Anonymous (2)

**deceased*

IN HONOR OF
Dr. Birch
Dr. Daniel Craviotto
Dr. Salvatore Garafalo
Great Care Received at GVCH
Ann Kwarcinski

IN MEMORY OF
Mary Aldrich
Sam Alfano
Dr. Charles Bradley
Julian Priscilla Hall
Juan “JJ” Hernandez
The Ingalls Family
Dr. E.J. Jahnke

Professor Frederick F. Lange
Alfons Maier
Linda McClure
Dr. Robert McGinnis
Dr. Margaret Savage Ray
James Russell Smith
Edward Steffens
Art Widling



RUN OR WALK
WITH MOM, OR
IN HER HONOR

MARK YOUR CALENDARS
FOR THE RETURN OF
**MILES FOR MOMS
5K RUN/WALK**

AT GOLETA VALLEY COTTAGE HOSPITAL

Hosted by the Goleta Valley Cottage Hospital Foundation
Saturday, May 7, 2022
Registration: 7:30 a.m. | Walk/Run: 9 a.m.

All proceeds go directly to the Goleta Valley Cottage Hospital
Foundation to help ensure the best care for our community.

SANTA YNEZ VALLEY COTTAGE HOSPITAL FOUNDATION

2020 BOARD OF DIRECTORS

Sid Goldstien, President
Charles “C.J.” Jackson, Immediate Past President
Judith Dale, Vice President
Lana Clark Shutz, Secretary
Michael J. Sgobba, Treasurer
Allen Anderson
Jeff Cotter
Gustavo Dascanio, MD
Catherine Firestone
Richard Nagler
Tresha Sell
Ernest Zumalt

SENIOR PHILANTHROPY OFFICER

June Martin

\$100,000 & ABOVE

The Wood-Claeysens Foundation

\$25,000 TO \$99,999

Elaine F. Stepanek Foundation
Mr. & Mrs. Jonathan H. Grunzweig
Hans Skytt Family Charitable Remainder Trust
Betty L. Jensen*
Mrs. Jane Kievit*
Mr. & Mrs. Jon C. Lukas
Mrs. Gerry B. Shepherd
Ron & Betty Ziegler

\$10,000 TO \$24,999

Arndt Construction, Inc.
D’Augustine Foundation
Oscar & Elizabeth Guidali
Mr. & Mrs. Dennis Jorgensen
Mr. & Mrs.* Ken Mills
Mr. & Mrs. Alexander M. Power
Tom & Nancy Elsaesser Foundation

\$1,000 TO \$9,999

Mr. Allen F. Anderson & Ms. Jane Shade
Ann Jackson Family Foundation
Mr. & Mrs. John Bacon III
Dr. & Mrs. Edward S. Bentley
Bethania Lutheran Church
Dr. & Mrs. Gary M. Blum
Mr. Josef Blum
Mr. & Mrs. Craig Braly
Ms. Arlene Carol Brown

Mr. Michael Carpenter
Mr. & Mrs. Lee Carr
Mr. & Mrs. James Cassidy
Mr. & Mrs. Charles Chester
Mr. & Mrs. Ronald Dale
Dr. & Mrs. G.A. Dascanio
Edmund E. & Helen A. Hoskins
Charitable Remainder Unitrust
Mr. & Mrs. Kirk Edwards
Mr. & Mrs. Rudy Eisler
Mr. & Mrs. Brooks Firestone
Mr. & Mrs. James Firth
Mrs. Janet Forster
Ms. Alexandra Geremia
Mr. & Mrs. Lewis P. Geyser
Mr. & Mrs. Sidney J. Goldstien
Mr. & Mrs. Charles Greenwald
Mr. & Mrs. Hans Gregersen
Ms. Pamela Halle
Ms. Jan Handtmann
Mr. & Mrs. Marcel Hinsbeeck
Mr. & Mrs. Kenneth Hunter
Mr. William Ilmanen & Mrs. Ethel D. Larrabee
The Iscovich Foundation
Mrs. Miriam Jones
Ms. Rose Kinyon
Mr. Edward L. Kushner
Robert & Susan Lieff
Mr. & Mrs. Stephen Lykken
Mr. & Mrs. Ken Martin
Montecito Bank & Trust
Ms. Elaine Morris
John H. Moxley III, MD
Mr. & Mrs. Richard Nagler
Mr. & Mrs. Gary Nett
New Frontiers Natural Marketplace
Mr. & Mrs. Roger Nielsen
Mr. & Mrs. Lyle Poncher
Mr.* & Mrs. James Radcliffe
Mr.* & Mrs. Daniel Reeves
Mr. & Mrs. Robert Reif
Rudi Schulte Family Foundation
Dr. & Mrs. Stephen W. Russell
Mr. & Mrs. Paul Schaeffer
Mr. & Mrs. Henry Schulte
Mr. & Mrs. Mike Sell
Mr. & Mrs. Richard Shawcroft Sr.
Mr. & Mrs. Michael Robert Sinclair
Mr. & Mrs. Jonah Sulak
Mr. & Mrs. Robin Taliaferro

Kristin & Rick Tufvesson
Mr. & Mrs. Ken Verkler
Mr. Jim Vreeland
Mr. & Mrs. Ron Werft
The Wrather Family Foundation
Dr. & Mrs. John D. Wrench
Tony & Jackie Yanez
Mr. & Mrs. Ernest Zomalt
Anonymous (2)

\$500 TO \$999

Mrs. Lee Barranco
C&D CPAs & Advisors
Mr. Gerald Chase
Ms. Gennine D’Ambra
Danish Brotherhood
Mr. William Davidge & Ms. Peggy Evans
Mr. & Mrs. Thomas H. Dittmer
Ms. Virginia Erlich
Kathleen & J.P. Hatchell
Mr. & Mrs. Don Heimark
Mr. & Mrs. William Hollowell
Mr. & Mrs. Rob Hunt
Mr. & Mrs. William Krauch
Mr. & Mrs. Steve Lenzi
Ms. Marith J. Levers
Los Olivos Rotary Club Foundation
Mr. & Mrs. Arthur E. Mercado Jr.
Mrs. Thoma Martinov
Robert & Deborah Myman
Mr. & Mrs. Thomas W. Olmsted
Mr. & Mrs. Bent Olsen
Marc & Laurie Owens
Mr. & Mrs. Lewis E. Peterson
Mr. & Mrs. James Richardson
Mr. & Mrs. Mark C. Rick
Ms. Ruth H. Rubey
Mr. & Mrs. Harris Sherline
Mr. & Mrs. Vincent A. Sullivan
Mr. George W. Ullman
Mr. & Mrs. Bennie M. Valencia
Mr. & Mrs. Gary D. Waer
Anonymous

\$100 TO \$499

Mrs. Karin Aitken
Ms. Cynthia S. Allan
Mr. & Mrs. Ted Allen
Mrs. Lois Amsden
Ms. Carol Anders
Mrs. Barbara Austin

Bob & Charlene Baker
Ms. Norma J. Bass
Mr. & Mrs. Mark Bates
Mr. & Mrs. Roger Baumgarten
Mr. Christopher L. Bean
Mr. & Mrs. Bill Bernstein
Mr. & Mrs. Bob Bierig
Mr. & Mrs. Val Bisoglio
Lt. & Mrs. Bryce E. Blakely
Mr. Dennis Bougher
Ms. Christie Bourdet
Mr. & Mrs. Wymond W. Bradbury
Mr. & Mrs. Conrad Buff
Mrs. & Mrs. Herbert Bundgen
Mr. & Mrs. Bill Claire
Drs. Guy & Ramona Clark
Mrs. Sybil K. Cline
Mrs. Virginia Cline
Mr. & Mrs. James Cloonan
Mr. & Mrs. Jeff Cotter
Ms. Christina Criswell & Mr. John Gilbert
Ms. Katie Dabney
Mr. & Mrs. Terence P. Daly
Ms. Joan A. Davidson
Ms. Tinsley Davis
Ms. Becky J. Deutsch
Ms. Susan deWit
Ms. Patricia Duncan
Ms. Denise D. Edie
Mrs. Barbara L. Edmiston
Dr. & Mrs. Frederick B. Emerson
Mr. & Mrs. Don Fiore
Mr. & Mrs. Mark Foss
Ms. Jane Frazier
Mrs. Kerry J. Gerlach
Mr. & Mrs. Charles R. Giardina
Ms. Vivien C. Gillless
Mrs. Susan Gionfriddo
Mr. & Mrs. David Goldstien
Ms. Florentina L. Gozun
Mr. & Mrs. Gary M. Grier
Mr. & Mrs. Mike Hadley
Mr. & Mrs. Paul Halme
Mrs. Gelene Hammers
Mrs. Marilyn Hanson
Mr. & Mrs. William S. Hardy
Mr. John S. Harvey
Mr. & Mrs. Michael R. Hattrup
Ms. Shirley M. Heap
Mr. & Mrs. Jeffrey E. Henderson
Mr. & Mrs. Thomas W. Hendrick

SANTA YNEZ VALLEY COTTAGE HOSPITAL FOUNDATION RAISING FUNDS FOR NEW CT SCANNER

In the Santa Ynez Valley Cottage Hospital ER, the CT (computerized tomography) scanner is essential diagnostic equipment to support lifesaving treatment and provides thousands of CT scans each year. The new CT scanner will advance the ability to quickly diagnose disease and injury using lower levels of radiation. Santa Ynez Valley Cottage Hospital is recognized for outstanding care with honors including:

- **Stroke-Ready Certification** by the The Joint Commission and Santa Barbara County Emergency Medical Services. The ER includes a Telestroke Program with neurologist on call 24/7 and a telemedicine robot to support rapid care.
- **Top 20 Critical Access Hospitals** in the nation for Best Practice in Patient Satisfaction by the National Rural Health Association in 2019 and 2020.
- **Guardian of Excellence Award** for Patient Experience from Press Ganey



You can help. To make a donation toward the new CT Scanner at Santa Ynez Valley Cottage Hospital, contact June Martin, Senior Philanthropy Officer, SYVCHF, 805-691-9509.

COTTAGE REHABILITATION HOSPITAL FOUNDATION

2020 BOARD OF DIRECTORS

Renee Nordstrand, Chair
Katina Zaninovich, Vice Chair
Jean Smith, Treasurer
William H. Werts, Secretary
Sharon Basham, MD
Philip Delio, MD
John Goodman
Paul A. Graziano
Karen Hickman
Lailan McGrath
Ashley Parker Snider

\$500,000 OR MORE

The Gretler Foundation

\$100,000 TO \$499,999

Clifford F. Ahlers Trust
Georgia Lee Funsten*
Mrs. Caroline Gazin

\$10,000 TO \$99,999

The Cappello Foundation
Ms. Karen Hickman
The Kirby-Jones Foundation
Ms. Renee J. Nordstrand
Mr. Harold Richards*
Santa Barbara Foundation

SENIOR PHILANTHROPY OFFICER

Danielle Kent

Ms. Ashley Parker Snider
Mr. John Solu
Ms. Katina M. Zaninovich

\$1,000 TO \$9,999

Mr. & Mrs. Hayim Abulafia
Achilles Prosthetics & Orthotics, Inc.
Bartelle Trust
Madeline Beran
Mr. Jimmie L. Bray
Mr. John E. Byrne
Mr. & Mrs. Reid Cederlof
Central Coast Physical Medicine & Rehabilitation
Mr. James Costanzo

Mrs. Elizabeth H. Edwards
Mr. & Mrs. Joel Fithian
Dr. & Mrs. Benjamin Hammett
Hanger Clinic
Mr. Richard S. Reeder
Mr. & Mrs. Peter S. Seaman
Shield Healthcare
Mr. & Mrs. Jim Smith
Ms. Trudy L. Smith
Mr. & Mrs. Daniel M. Thomas
Kristin & Rick Tufvesson
Mr. & Mrs. Ron Werft
Dr. & Mrs. George S. Writer
Dr. & Mrs. Phillip J. Wyatt
Mr. & Mrs. Robert Zukin

\$100 TO \$999

Mr. & Mrs. Ross D. Adams
Mr. & Mrs. Timothy Aguilar
Mr. & Mrs. Jack M. Anderson
Jeffrey T. Bell
Mr. John A. Brinker
Ms. Baille R. Brown
Mr. & Mrs. Charley Burgett
Mr. William S. Burtness
Mr. & Mrs. Ted Campbell
The Capital Group Companies Charitable Foundation
Mr. John S. Carter
Mr. Jim G. Chachakos
Mr. Alexander Chambers
Ms. Martha Degasis

Mr. & Mrs. William Y. Hensge
Ms. Michele Hinnrichs
Mr. & Mrs. Alan Hitt
Mr. & Mrs. Helmut J. Holzheu
Mr. & Mrs. David E. Houtz
Mr. John Howe
Mr. & Mrs. Terence W. Hughes
Mrs. Johannes Jaeger
Mr. & Mrs. Robert E. Jennings
Ms. Elizabeth Jensen
Mrs. Gladys G. Johnston
Mr. Evans Jones
Mr. & Mrs. Richard Kline
Mr. & Mrs. Robert Korte
Mr. & Mrs. Frank Kristoffersen
Mrs. Inge Kristoffersen
Mr. & Mrs. Fred Krug
Mr. & Mrs. Richard Krull
Mr. & Mrs. Guenter Kuehn
Mr. & Mrs. Herbert L. Kuntz
Ms. Hideko K. Lane
Mr. & Mrs. Johannes Lauridsen
Mr. & Mrs. Robert R. Leite
Mr. & Mrs. Thomas Lingham Jr.
Ms. Merrie Lipton
Mrs. Vera Margolis
Mrs. Dolores Martinez
Mrs. Heather McCollum
Mr. & Mrs. Stewart Mee
Ms. Katie H. Michael

Mr. & Mrs. Jeffrey D. Mitchell
Mr. & Mrs. Steve Muellner
Ms. Marsha J. Mullaney-Novak
Mr. Adrian Munnemann
Mr. Chris Muzzo
Ms. Manjit Nagra
Mr. Dennis G. Neal
Ms. Jo Ann Neff
Ms. Mary B. Nuanes
Mrs. Linda Onasch
Mr. & Mrs. Erwin Ostertag
Mr. & Mrs. Stanley Painter
Ms. Jayne Papers
Mr. & Mrs. Chris Parker
Mr. & Mrs. Donald R. Payne
Ms. Birgitte Pedersen
Dr. Kim L. Peters
Mr. & Mrs. John M. Petersen
Mr. Mark Petersen
Ms. Diane Petras
Mr. Charles J. Pira
Mr. & Mrs. William Powell
Ranch Club Mobile Estates
Mrs. Margaret M. Rasmussen
Mr. & Mrs. Robert W. Rau
Mr. & Mrs. Gary Riches
Ms. Charity V. Romero
Mr. & Mrs. William Rose
Mr. & Mrs. Arthur A. Rowley
Mr. & Mrs. Ralph V. Ruegsegger

Mr. & Mrs. John Sanger
Mr. Steven C. Scott
Ms. Carole Self
Mr. George Shaw
Dr. & Mrs. Drexel B. Sheahan
Mr. & Mrs. Vincent J. Shriver Jr.
Dr. & Mrs. Glenn R. Simmons
Solvang Rotary Foundation
Ms. Cheryl Stauffer
Mrs. JoAnn Taylor
Mr. & Mrs. Gerald L. Thomas
Ms. Eileen Thornton Caris
Mr. & Mrs. George Tinker
Mrs. Helen I. Townsend
Mr. & Mrs. Randy Tripp
Mr. Spencer Turnbull
Ms. Pamela Y. Valencia
Mr. Peter Van Iderstine
Ms. Lourdes VanGent
Mrs. Jewely Van Valin-Jackson
Mr. Craig VanDerwarker
Ms. Connie Vanlerberghe
Mr. & Ms. Raymond Velasquez
Mr. James A. Victor
Mr. Thomas C. Wendt
Mrs. Gerda J. Willis
Mr. & Mrs. Vic Zanini
Anonymous (2)

*Deceased

IN HONOR OF

The Alisal Ranch Staff
Gustavo Dascanio, MD
Don & Madeline Heimark
William J. Heringer, MD
Denise Holmes, RN
Glenna Hughes
Nelson Jones
Roger I. Lane, MD
Miguel A. Loya, DO
Ann & Donald Petroni
The Petroni Family
Santa Cota Market

IN MEMORY OF

Gordon W. Aitken
Dean Anders
Norman Anderson
Garland Austin
Frank H. Barranco, MD
Peg Bates
Ann Bertero
Marilou Blackstock
Nancy Blanchard
Margaret A. Brown
Rochelle Hadley Bruhn
Willi Campbell
Helen Casanova
Tom & Jill Clevenger
Neil M. Cline

Millie Dutra
Chester “Ike” E. Eckermann
Roger Hanson
William S. Holley
Noel Johnson
Frank Langell
Alice Furman Martin
John Martinez
Arnie & Amanda Meisgeier
Dale & Carol Molesworth
Doris Moxley
Jean Pack
Floyd “Whitey” Perches
Jamie Raney
Ira Rogers
John A. Schnittker
Henry J. “Hank” Scudder
Charlene A. Shaw
Gerald Townsend
William B. Van Valin, MD
Pauli Van Valin
Paul C. Willis
Patricia Youngman

COTTAGE REHABILITATION HOSPITAL PLANS MOVE TO GOLETA CAMPUS

Cottage Rehabilitation Hospital offers the only accredited comprehensive, traumatic brain injury and spinal cord injury rehabilitation programs between Los Angeles and the San Francisco Bay Area. Now, with increasing patient demand, the need for more advanced state-of-the-art facilities and a deadline to meet seismic safety standards, Cottage Rehabilitation Hospital (CRH) Foundation and Goleta Valley Cottage Hospital (GVCH) Foundation are collaborating on a new fundraising campaign to support CRH’s move to GVCH. Already more than \$6.85M has been pledged or contributed. This move ensures residents of the Central Coast will have a full scope of rehabilitative specialties and services and a building designed to support the most advanced rehabilitative therapies therapies prescribed after routine orthopedic surgery or to promote recovery from complex illness or trauma.

CAMPAIGN STEERING COMMITTEE

Leaders from both GVCH and CRH Foundation Boards and from the community have come together to lead this endeavor. We offer sincere appreciation to these committed volunteers who have stepped forward to lead the campaign for the new Cottage Rehabilitation Hospital at GVCH: Sharon Basham, MD, Robin Cederlof, Lori Daffron, Valerie Fuelle, John Goodman, Paul Graziano, Jim Knight, Lynda Nahra, Ashley Parker-Snider, Eric Seale and Katina Zaninovich.



To learn more about ways to support this campaign, contact Dani Kent, Senior Philanthropy Officer, CRH Foundation at dkent@sbch.org or 805-680-2496 or Tanya Gonzales, CFRE, Senior Philanthropy Officer, GVCH Foundation at t2gonzal@sbch.org or 805-696-7918.

Mr. & Mrs. John Doordan
Mr. & Mrs. Jesse Espinoza
Mr. Sylvester J. Fior Jr.
Dr. & Mrs. Richard E. Fulton
Mr. Scott Garner
Mr. Jim Gentilcore
David L. George Family Trust
Ms. Jo-Linda Greene
Ms. Sarah Gruber
Mrs. Margaret A. Hamilton
Mr. & Mrs. William A. Hathoot
Ms. Anastasia Huiner
Ms. Sandy C. Hunt
Mr. Robert Jauregui
Tariq & Maxine Kadri

Joyce F. Kendall
Ms. Danielle Kent
Yvonne D. Kirkendall
Mrs. Ronald R. Koegler
Mr. Cody Kowalczyk
Mr. & Mrs. Jeff Kruthers
Mr. & Mrs. Herbert L. Kuntz
Mr. Garry Lawrence
Mr. & Mrs. Robert Leighty
Mr. & Mrs. William J. Mitchell
Mr. & Mrs. Dennis Naiman
Mr. & Mrs. Gary Nett
Mr. & Mrs. Andy Neumann
Dr. & Mrs. Robert W. Olson
Ms. Roberta J. Parkinson

Spencer Pearson
Dr. & Mrs. Joseph Carl Peus
Ms. Susan Blanchard Plumer
Mr. & Mrs. Erling J. Pohls
Ms. Sandra L. Reid
Mrs. Ramona R. Salazar
Richard V. Sell
Ms. Elizabeth Smith
Mrs. & Mrs. Scott Smith
SportRite Products
Ms. Lynne G. Sprecher
Magda & Larry Stayton
Mr. Robert J. Sullivan
Ms. Susan K. Thompson
Mr. & Mrs. Donn V. Tognazzini

United Way of Santa
Barbara County
Mr. & Mrs. Richard L. Walker Jr.
Mr. & Mrs. John H. Weidner
Mr. Robert D. Wendt
Mr. & Mrs. William H. Werts
Dr. & Mrs. Stewart White
Deborah Wilson
Mr. Robert H. Winkler

**deceased*

IN HONOR OF
CRH Staff
Tariq Kadri, Melinda Staveley,
& Ann Veazey

Sarah M. Mercado
David Powdrell
Violet Stepan
Rene Van Hoorn & Wheelchair
Sports Camp Team

IN MEMORY OF
Yvonne Anderson
Thomas Bakker
Melinda Britz
James T. Bynum
Kate Doordan Klavan &
Jim Doordan
Harris Meisel

2021 JUNIOR WHEELCHAIR SPORTS CAMP

Sponsored by the Cottage Rehabilitation Hospital Foundation, the Junior Wheelchair Sports Camp is an annual event created to inspire remarkable achievements by children who use wheelchairs. Due to the COVID pandemic, the 2021 camp was a four-day virtual event with fun, interactive, empowering activities for both campers and their families, and the event was expanded to include young adults up to age 29. The camp's theme was "I Am My Power."

EVENT HIGHLIGHTS:

- Special guest instructor, Wesley Hamilton, an award-winning athlete, advocate, and CNN Hero, is the founder and CEO of Disabled But Not Really (DBNR), a non-profit with a mission to advance courage and confidence for those who live with disabilities. He shared his own inspiring story and offered sessions on fitness and nutrition.
- Activity boxes mailed to campers included items to participate in every activity. This year dancing and boxing were two of the campers' favorite activities. Other activities included an obstacle course, table tennis, power wheelchair sports, fitness, Frisbee golf, tennis, yoga, nutrition, cooking, games and more.
- Campers enjoyed a special feature on filmmaking and content creation and shared their own short film with others.



NOTES FROM GRATEFUL PARENTS

"This is Rosy's favorite thing to do every year. Your wonderful team is amazing, and their kindness warms my heart and means the world to Rosy."

"I can't thank you enough for this camp! Megan is having a great time and has been excited for camp all summer. What an awesome staff!"

"Thank you a million for such a beautiful camp experience for not only our daughter but for us as well."



To support Junior Wheelchair Sports Camp, please contact Dani Kent at 805-680-2496.

EMPLOYEE GIVING

Giving back is part of Cottage Health's workplace culture, and Cottage employees are engaged in supporting their communities and their hospitals. The following list recognizes current and retired Cottage employees who gave back to Cottage Health in 2020.

Robin Achenbach
Sherry Acord
Carolina Aguilar
Erika Aldaz
Cristina M. Andalon
Sandra F. Armstrong
Julie Ascher
Concepcion Bahena-Gomez
Lillian F. Ball
Marsha Baselice
Pooja Bavkar
Katy Bazylewicz
Rebecca D. Bedel
Sierra Beeson
Bob Behbehanian
Joan Bennett
John Berberet
Michelle T. Bernal
Rhonda Bernstein
Kim Berry
Helena C. Bertels
Richard Beswick
Omer Bharoocha

Nikunj Bhavsar
Ron Biscaro
Diane Bock
Kimberly Bowman
Gilda J. Branuelas
Joan F. Bricher
Charles Brown
Douglas Bube
Morgan E. Campbell
Steven Caputo
Emily Case
Griselda Castro
LaRisa Chambers
Kuei-Meei Chieng
Jane K. Choe
Felicia Chukwuka
Debra Collingwood
Tina Collins
Leila K. Cook
Daniel Cooperman
Aida Cordero
Wendy Cork Keyzer
Kathleen Crean

Marc Dailey
Susan E. Dale
Gennine D'Ambra
Elizabeth Davenport
Eva De La Mora
Ruth L. De Leon
Arie Dejong
Vanessa C. Del Toro
Mimi Dent
Sandra DePaola
David T. Dietrich
Lisa Dominguez
Vanessa Donati
Patricia Dooley
Jeronimo L. Duarte
Kathleen Dudley
Charlotte Dullea
Rob Dwyer
Barbara L. Edmison
Jill Effling
Michele Elias
Linda Elreda
Jacqueline M. Encarnacion

James Esparza
Magdalena Esparza
Ruth Esqueda
Monica M. Evans
Afshin Fatholahi
Whitney Featherstone
Lisabeth Feinstein
Steven A. Fellows
Charlene Fernandez
Rosario A. Fernandez Aguirre
Jennifer Ferrick
Corina A. Figueroa
Gabriela M. Flores
Maria T. Flores
Ryan J. Foster
Leslie Friesen
Mary K. Fulcher
Danielle Gaines
Beronica Garcia
Dodi Gauthier
Herb Geary
Andrew S. Gersoff
Tanya G. Gonzales

Katie Gorndt
Wendy K. Gray
Dena Green
Amanda Grijalva
Teresa M. Gritt
Debra Gualtieri
Marynell Ilene Gutierrez
Roxanne Hale
Brittany Haliani
Lauren Hardy
Darryl Hein
Patricia Heller
Nick Henderson
Shawn Hodges
Amber M. Hoffman
Elizabeth Hollen
Cindy Howe
Johanna Hoyos
Cynthia A. Ingham
Junde Irabon
Jennifer L. Jack
Donna Janega
Marian Jean



Lucila Jimenez
Teresa Johnson
Wendy Kaufmann
Darcy Keep
Dennis Keever
Brandon Kelley
Mary Kelly
Susan Kelty
Danielle Kent
Dianna Keough
Hilda Kirchmaier
Carrie Kirchner
Jennifer L. Krispi
Amy Kunze
David Kuwata
Lisa LaBouve
Donald E. Lafler
Ron Lafrican
Gretchen L. Lauppe Jones
Diane Lauter
Alysha Lee
Kim A. Lemon
Camilla A. Lettini
Catherine J. Leyva
Kyle Libby
Carla A. Long
Sandra Lood
Sergio Lopez
Isaac Luevano
Sarah Lukenbill
Liz Lundquist
Sharon Lutz
Glenda Madrid
Irma Marquez

Peggy A. Martens
June Martin
Kendall Martin
Cindy Martinez
Maria Martinez
Mausolo Martinez
Melanie A. Matney
Nancy May
Caitlin McAvoy
Vicki McPhail
Craig Meyers
Carmen Meza
Taryn A. Miller
Michael A. Minato
David Mitchell
Jeffrey D. Mitchell
Pilar Montgomery
Flavid Montoya
Lisa M. Moore
Kim Morales
Noah Morales
Petra Morales
Gail B. Moran
Jennifer L. Moran
Julie Morgan
Imelda M. Moseby
Mark V. Mullenary
Ella Murray
Roya Nassirpour
Kevin L. Nelson
Mayra Newbon
Daniel D. Newman
Rheana Newman
Tamara Norton

Katie O'Brien Mowery
Linda K. Ohrtman
Josie Olson
Dina Ontiveras
Ryan Ortega
Carmen M. Ortiz
Susan L. Otto
Jessica M. Pacheco Montes
Beatriz Pacheco Ruiz
Wenda E. Pagliaro
Deanna B. Panzarella
Roberta J. Parkinson
Debra Patelzick
Nicole Patton
Rosanne Pena
Yuli Peng
Maura R. Perez
Lanette R. Perry
Rose Petero-Hatmaker
Maria E. Peterson
Ann M. Peyrat
Ruby A. Phillips
Jacqueline Pierce
Richard B. Ragadio
Pantea Rahimian
Linda M. Reimer
Allison Reitz
Robin Reitz
Sheri Ribeiro
David C. Ridenour
Yvonne Rivera
Anthony Rock
Carlos Rueda De Leon
Trena Russell

Mary Ryan
Patrice P. Ryan
Catalina Saenz
Irma Saldana
Susan San Marco
Arturo Sanchez
Leslie A. Sanchez
Marilyn Sanchez Bravo
Sanaa Saquib
Nan Schooley
Theresa Selman
Paul F. Sherman
Sonya Shin
Ramon Silva
Elizabeth Smith
Brenda Stanley
Magda Stayton
Heather Stevens
Kathleen Stevens
Endang Sulasih
Deborah A. Sweeney
Maureen Taikowski
Esther Takacs
Brett Tande
Kortni B. Taulbee
Tamara Teitelbaum
Sandy Tejeda
Dana M. Theus
Daniel M. Thomas
Pamela S. Tinker
Joshua Torres
Kristin Tufvesson
Thomas R. Turner
Catherine M. Uhl

Holly L. Urbanus
Paul Valentich-Scott
Kathy Vanetti
Lourdes VanGent
Elizabeth Vasquez
Philip Vaughn
Kimberly J. Velasquez
Constance Verkaik
Justin Villa
Allison Viramontes
Kris L. Warner
Ron C. Werft
Ellen Sue Wiley
Barbara A. Willett
Cara Williams
Kathryn Williams
Tatiana Winterbottom
May Wong-Droese
Bethany Wood
Jaynie Wood
Edmund M. Wroblewski, MD
Jacqueline R. Ybarra
Samantha Yim
Maria Zate
Catherine A. Zimmer
Anonymous (7)



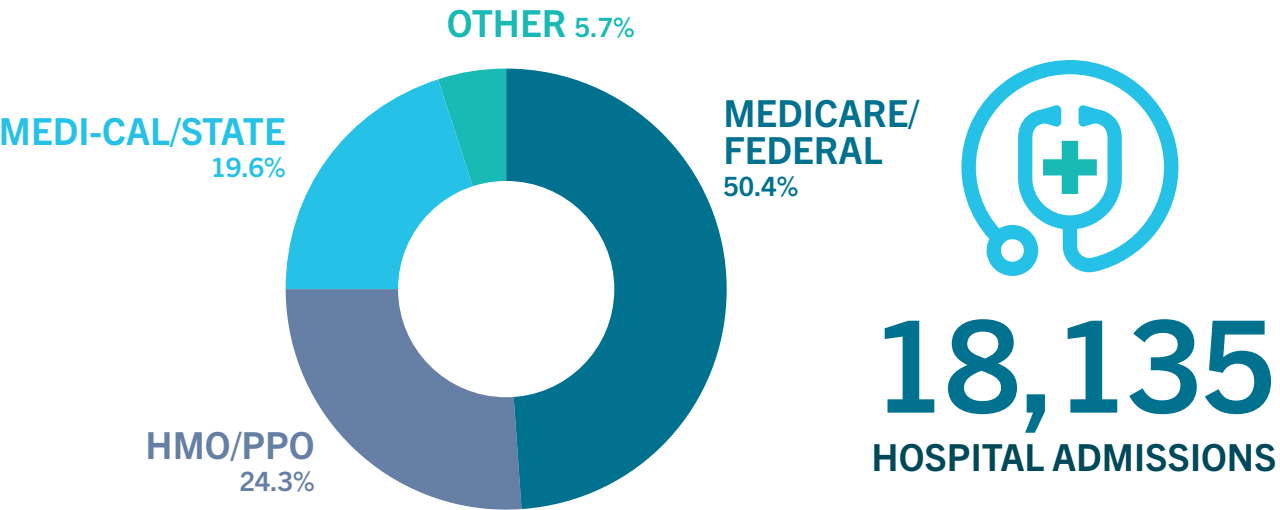
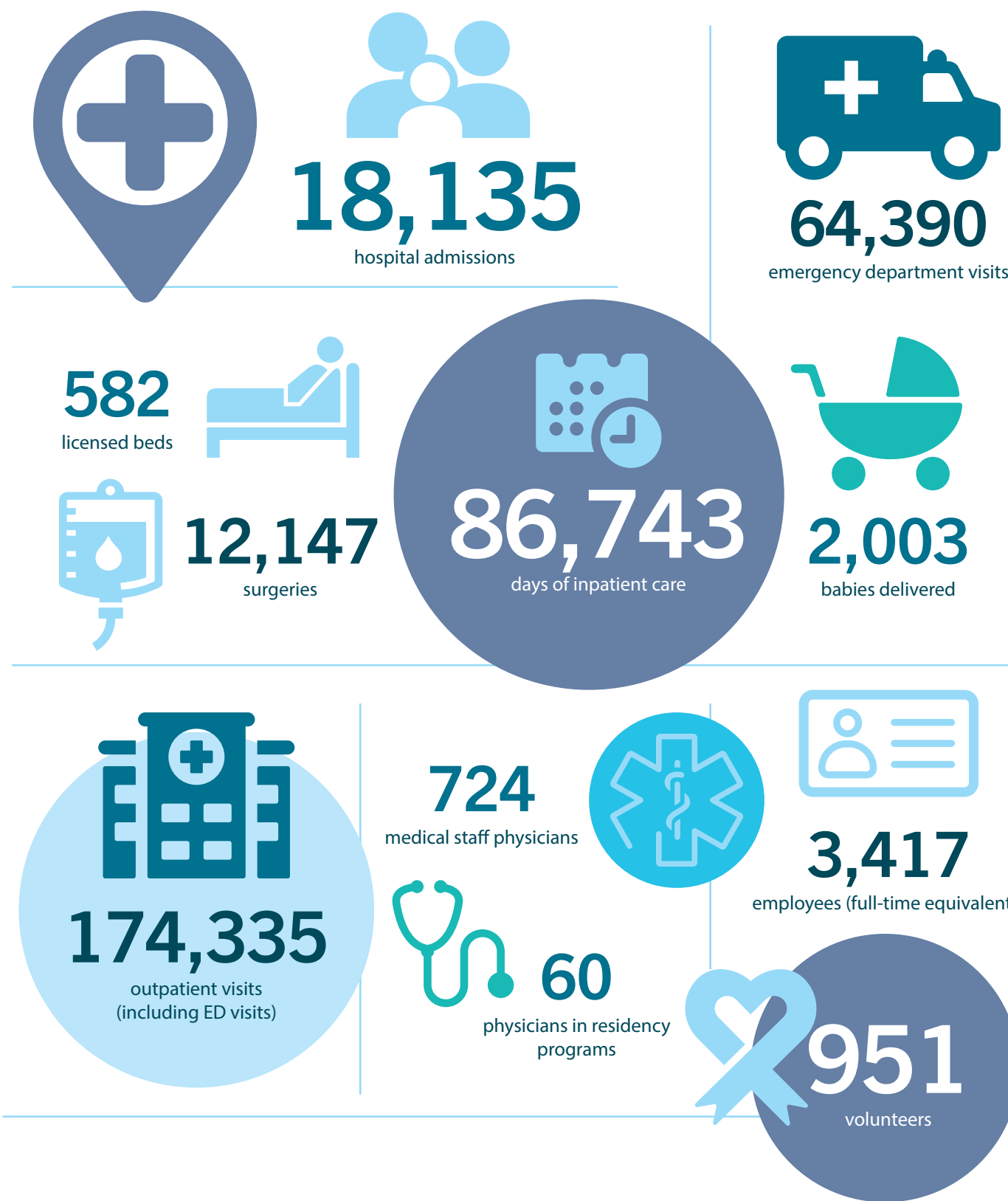
MISSION

To provide superior health care for and improve the health of our communities through a commitment to our core values of excellence, integrity and compassion.

VISION

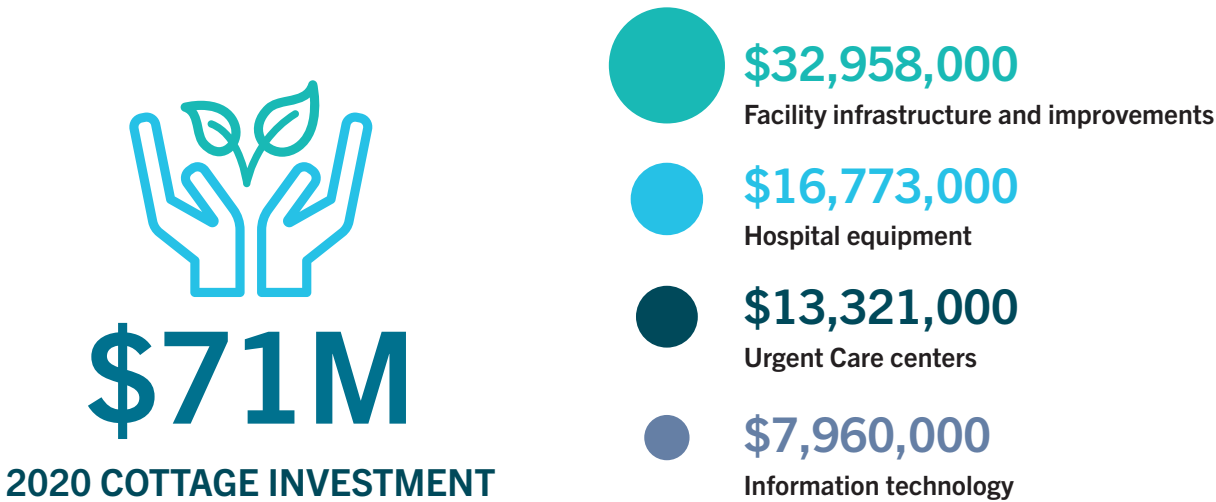
Cottage Health, through partnership with physicians and our communities, is recognized as a California leader in quality care, safety, patient experience, transparency, cost effectiveness and community health.

2020 COTTAGE HEALTH BY THE NUMBERS



2020 FINANCIAL RESPONSIBILITY

Revenue	\$930,180,000
Expenses	\$915,056,000
Operating Margin	\$15,124,000
Net Investment Income	\$96,428,000





Santa Barbara Cottage Hospital
PO Box 689
400 W Pueblo Street
Santa Barbara, CA 93102-0689

CHANGE SERVICE REQUESTED

NONPROFIT ORG
U.S. POSTAGE
PAID
PERMIT NO. 35
SANTA BARBARA, CA

Thank You

FOR DRIVING A LIFESAVING SUCCESS

From January to July 2021, a team of more than 1,300 caring people – healthcare professionals and volunteers from throughout the community – worked to provide more than 112,000 doses of vaccine during the COVID-19 Drive-Up Vaccine Clinic at Goleta Valley Cottage Hospital.

Cottage Health thanks all who received vaccines, those who contributed to the Emergency Response Fund, and those who staffed the clinic to protect our community. You have helped to save lives.

cottagehealth.org/covid19

